

Anti-EPHA2 antibody (100-180 N-Term) (STJ92940)

STJ92940

GENERAL INFORMATION

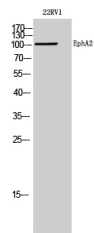
Product Type	Primary antibodies
Short Description	Rabbit polyclonal antibody anti-Ephrin Type-A Receptor 2 (100-180 N-Term) is suitable for use in Western Blot and ELISA research applications.
Applications	WB, ELISA
Host/Source	Rabbit
Reactivity	Human, Mouse

PRODUCT PROPERTIES

Clonality	Polyclonal
Clone ID	
Concentration	1 mg/mL
Conjugation	Unconjugated
Purification	The antibody was affinity-purified from rabbit anti-serum by affinity-chromatography.
Dilution Range	WB 1:500-1:2000 ELISA 1:40000
Formulation	PBS, 50% Glycerol, 0.5% BSA and 0.02% Sodium Azide.
Isotype	IgG
Storage Instruction	Store at -20°C for up to 1 year from the date of receipt, and avoid repeat freeze-thaw cycles.

TARGET INFORMATION

Gene ID	1969
Gene Symbol	EPHA2
Uniprot ID	EPHA2_HUMAN
Immunogen	The antiserum was produced against synthesized peptide derived from human EPHA2 at amino acid range 131-180
Immunogen Region	100-180 N-Term
Specificity	EPHA2 polyclonal antibody (Ephrin Type-A Receptor 2) binds to endogenous Ephrin Type-A Receptor 2 at the amino acid region 100-180 N-Term.
Immunogen Sequence	



Western blot analysis of 22RV1 cells using EphA2 Polyclonal Antibody diluted at 1: 1000

This product is suitable for in-vitro studies under the RESEARCH USE ONLY [RUO] licence. This product must not be used as for diagnostic or other medical purposes.
St John's Laboratory Ltd, Knowledge Dock Business Centre, University Way, London, E16 2RD | Tel: 0208 223 3081