

Anti-PTGER3 antibody (10-90 N-Term) (STJ92933)

STJ92933

GENERAL INFORMATION

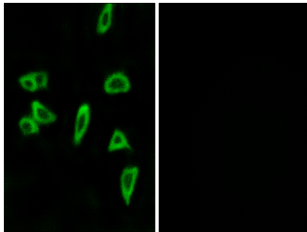
Product Type	Primary antibodies
Short Description	Rabbit polyclonal antibody anti-Prostaglandin E2 Receptor Ep3 Subtype (10-90 N-Term) is suitable for use in Western Blot, Immunofluorescence, Immunocytochemistry and ELISA research applications.
Applications	WB, IF, ICC, ELISA
Host/Source	Rabbit
Reactivity	Human, Rat, Mouse

PRODUCT PROPERTIES

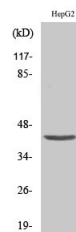
Clonality	Polyclonal
Clone ID	
Concentration	1 mg/mL
Conjugation	Unconjugated
Purification	The antibody was affinity-purified from rabbit anti-serum by affinity-chromatography.
Dilution Range	WB 1:500-1:2000 IF 1:200-1:1000 ELISA 1:10000
Formulation	PBS, 50% Glycerol, 0.5% BSA and 0.02% Sodium Azide.
Isotype	IgG
Storage Instruction	Store at -20°C for up to 1 year from the date of receipt, and avoid repeat freeze-thaw cycles.

TARGET INFORMATION

Gene ID	5733
Gene Symbol	PTGER3
Uniprot ID	PE2R3_HUMAN
Immunogen	The antiserum was produced against synthesized peptide derived from human PTGER3 at amino acid range 16-65
Immunogen Region	10-90 N-Term
Specificity	PTGER3 polyclonal antibody (Prostaglandin E2 Receptor Ep3 Subtype) binds to endogenous Prostaglandin E2 Receptor Ep3 Subtype at the amino acid region 10-90 N-Term.
Immunogen Sequence	



Immunofluorescence analysis of LOVO cells, using PTGER3 Antibody. The picture on the right is blocked with the synthesized peptide.



Western blot analysis of various cells using EP3 Polyclonal Antibody

This product is suitable for in-vitro studies under the RESEARCH USE ONLY [RUO] licence. This product must not be used as for diagnostic or other medical purposes.
St John's Laboratory Ltd, Knowledge Dock Business Centre, University Way, London, E16 2RD | Tel: 0208 223 3081