

Anti-PTGER2 antibody (230-310 C-Term) (STJ92931)

STJ92931

GENERAL INFORMATION

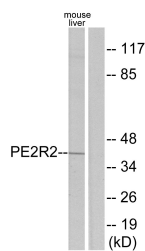
Product Type	Primary antibodies
Short Description	Rabbit polyclonal antibody anti-Prostaglandin E2 Receptor Ep2 Subtype (230-310 C-Term) is suitable for use in Western Blot, Immunofluorescence, Immunocytochemistry and ELISA research applications.
Applications	WB, IF, ICC, ELISA
Host/Source	Rabbit
Reactivity	Human, Mouse, Rat

PRODUCT PROPERTIES

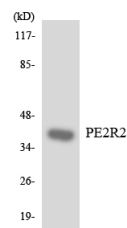
Clonality	Polyclonal
Clone ID	
Concentration	1 mg/mL
Conjugation	Unconjugated
Purification	The antibody was affinity-purified from rabbit anti-serum by affinity-chromatography.
Dilution Range	WB 1:500-1:2000 IF 1:200-1:1000 ELISA 1:10000
Formulation	PBS, 50% Glycerol, 0.5% BSA and 0.02% Sodium Azide.
Isotype	IgG
Storage Instruction	Store at -20°C for up to 1 year from the date of receipt, and avoid repeat freeze-thaw cycles.

TARGET INFORMATION

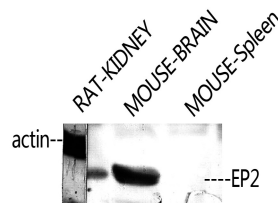
Gene ID	5732
Gene Symbol	PTGER2
Uniprot ID	PE2R2_HUMAN
Immunogen	The antiserum was produced against synthesized peptide derived from human PE2R2 at amino acid range 261-310
Immunogen Region	230-310 C-Term
Specificity	PTGER2 polyclonal antibody (Prostaglandin E2 Receptor Ep2 Subtype) binds to endogenous Prostaglandin E2 Receptor Ep2 Subtype at the amino acid region 230-310 C-Term.
Immunogen Sequence	



Western blot analysis of lysates from mouse liver, using PE2R2 Antibody. The lane on the right is blocked with the synthesized peptide.



Western blot analysis of the lysates from 293 cells using PE2R2 antibody.



Western blot analysis of RAT-KIDNEY, mouse brain, MOUSE-HEART using EP2 Polyclonal Antibody. Antibody was diluted at 1:2000.

This product is suitable for in-vitro studies under the RESEARCH USE ONLY [RUO] licence. This product must not be used as for diagnostic or other medical purposes.
St John's Laboratory Ltd, Knowledge Dock Business Centre, University Way, London, E16 2RD | Tel: 0208 223 3081