

Anti-EOMES antibody (N-Term) (STJ92929)

STJ92929

GENERAL INFORMATION

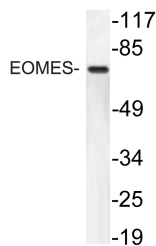
Product Type	Primary antibodies
Short Description	Rabbit polyclonal antibody anti-Eomesodermin Homolog (N-Term) is suitable for use in Western Blot and ELISA research applications.
Applications	WB, ELISA
Host/Source	Rabbit
Reactivity	Human, Mouse

PRODUCT PROPERTIES

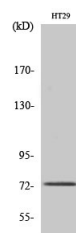
Clonality	Polyclonal
Clone ID	
Concentration	1 mg/mL
Conjugation	Unconjugated
Purification	The antibody was affinity-purified from rabbit anti-serum by affinity-chromatography.
Dilution Range	WB 1:500-1:2000 ELISA 1:10000
Formulation	PBS, 50% Glycerol, 0.5% BSA and 0.02% Sodium Azide.
Isotype	IgG
Storage Instruction	Store at -20°C for up to 1 year from the date of receipt, and avoid repeat freeze-thaw cycles.

TARGET INFORMATION

Gene ID	8320
Gene Symbol	EOMES
Uniprot ID	EOMES_HUMAN
Immunogen	The antiserum was produced against synthesized peptide derived from human EOMES at amino acid range 59-108
Immunogen Region	N-Term
Specificity	EOMES polyclonal antibody (Eomesodermin Homolog) binds to endogenous Eomesodermin Homolog at the amino acid region N-Term.
Immunogen Sequence	



Western blot analysis of lysate from HT29 cells, using EOMES antibody.



Western blot analysis of various cells using EOMES Polyclonal Antibody cells nucleus extracted by Minute™ Cytoplasmic and Nuclear Fractionation kit (SC-003, InventiBiotech, MN, USA).

This product is suitable for in-vitro studies under the RESEARCH USE ONLY [RUO] licence. This product must not be used as for diagnostic or other medical purposes.
St John's Laboratory Ltd, Knowledge Dock Business Centre, University Way, London, E16 2RD | Tel: 0208 223 3081