

Anti-EZH1 antibody (140-220 Internal) (STJ92928)

STJ92928

GENERAL INFORMATION

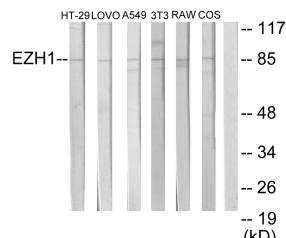
Product Type	Primary antibodies
Short Description	Rabbit polyclonal antibody anti-Histone-Lysine N-Methyltransferase Ezh1 (140-220 Internal) is suitable for use in Western Blot, Immunohistochemistry, Immunofluorescence, Immunocytochemistry and ELISA research applications.
Applications	WB, IHC-P, IF, ICC, ELISA
Host/Source	Rabbit
Reactivity	Human, Mouse, Simian

PRODUCT PROPERTIES

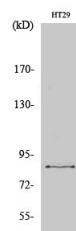
Clonality	Polyclonal
Clone ID	
Concentration	1 mg/mL
Conjugation	Unconjugated
Purification	The antibody was affinity-purified from rabbit anti-serum by affinity-chromatography.
Dilution Range	WB 1:500-1:2000 IHC 1:100-1:300 IF 1:200-1:1000 ELISA 1:40000
Formulation	PBS, 50% Glycerol, 0.5% BSA and 0.02% Sodium Azide.
Isotype	IgG
Storage Instruction	Store at -20°C for up to 1 year from the date of receipt, and avoid repeat freeze-thaw cycles.

TARGET INFORMATION

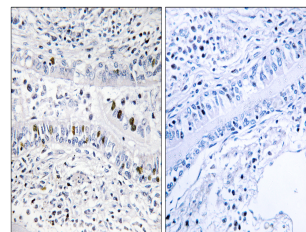
Gene ID	2145
Gene Symbol	EZH1
Uniprot ID	EZH1_HUMAN
Immunogen	The antiserum was produced against synthesized peptide derived from human EZH1 at amino acid range 171-220
Immunogen Region	140-220 Internal
Specificity	EZH1 polyclonal antibody (Histone-Lysine N-Methyltransferase Ezh1) binds to endogenous Histone-Lysine N-Methyltransferase Ezh1 at the amino acid region 140-220 Internal.
Immunogen Sequence	



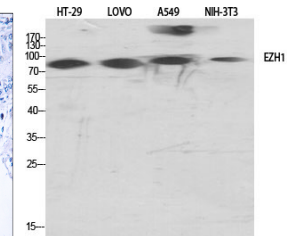
Western blot analysis of lysates from HT-29, LOVO, A549, NIH/3T3, RAW264.7, and COS7 cells, using EZH1 Antibody. The lane on the right is blocked with the synthesized peptide.



Western blot analysis of COS7 cells using ENX-2 Polyclonal Antibody cells nucleus extracted by Minute TM Cytoplasmic and Nuclear Fractionation kit (SC-003, Inventiotech, MN, USA).



Immunohistochemistry analysis of paraffin-embedded human lung carcinoma tissue, using EZH1 Antibody. The picture on the right is blocked with the synthesized peptide.



Western blot analysis of various cells using ENX-2 Polyclonal Antibody cells nucleus extracted by Minute TM Cytoplasmic and Nuclear Fractionation kit (SC-003, Inventiotech, MN, USA).

This product is suitable for in-vitro studies under the RESEARCH USE ONLY [RUO] licence. This product must not be used as for diagnostic or other medical purposes.
St John's Laboratory Ltd, Knowledge Dock Business Centre, University Way, London, E16 2RD | Tel: 0208 223 3081