

Anti-HSP90B1 antibody (730-810 C-Term) (STJ92925)

STJ92925

GENERAL INFORMATION

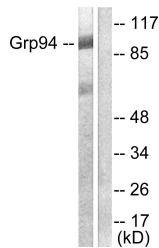
Product Type	Primary antibodies
Short Description	Rabbit polyclonal antibody anti-Endoplasmic (730-810 C-Term) is suitable for use in Western Blot, Immunohistochemistry, Immunofluorescence, Immunocytochemistry and ELISA research applications.
Applications	WB, IHC-P, IF, ICC, ELISA
Host/Source	Rabbit
Reactivity	Human, Mouse

PRODUCT PROPERTIES

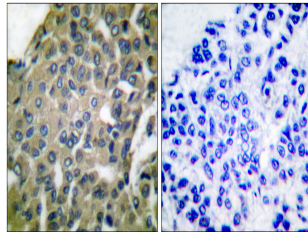
Clonality	Polyclonal
Clone ID	
Concentration	1 mg/mL
Conjugation	Unconjugated
Purification	The antibody was affinity-purified from rabbit anti-serum by affinity-chromatography.
Dilution Range	WB 1:500-1:2000 IHC 1:100-1:300 IF 1:200-1:1000 ELISA 1:20000
Formulation	PBS, 50% Glycerol, 0.5% BSA and 0.02% Sodium Azide.
Isotype	IgG
Storage Instruction	Store at -20°C for up to 1 year from the date of receipt, and avoid repeat freeze-thaw cycles.

TARGET INFORMATION

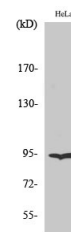
Gene ID	7184
Gene Symbol	HSP90B1
Uniprot ID	ENPL_HUMAN
Immunogen	The antiserum was produced against synthesized peptide derived from human GRP94 at amino acid range 754-803
Immunogen Region	730-810 C-Term
Specificity	HSP90B1 polyclonal antibody (Endoplasmic) binds to endogenous Endoplasmic at the amino acid region 730-810 C-Term.
Immunogen Sequence	



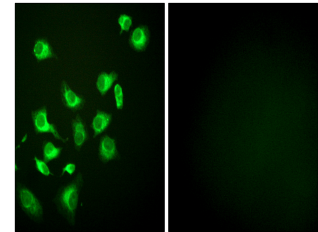
Western blot analysis of lysates from SKOV3 cells, using GRP94 Antibody. The lane on the right is blocked with the synthesized peptide.



Immunohistochemistry analysis of paraffin-embedded human breast carcinoma tissue, using GRP94 Antibody. The picture on the right is blocked with the synthesized peptide.



Western blot analysis of HeLa cells using Endoplasmic Polyclonal Antibody diluted at 1: 1000



Immunofluorescence analysis of HepG2 cells, using GRP94 Antibody. The picture on the right is blocked with the synthesized peptide.