

Anti-SH3GLB2 antibody (100-180 Internal) (STJ92923)

STJ92923

GENERAL INFORMATION

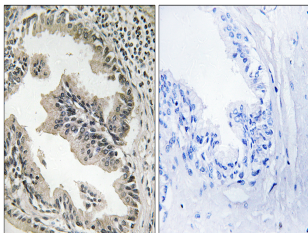
Product Type	Primary antibodies
Short Description	Rabbit polyclonal antibody anti-Endophilin-B2 (100-180 Internal) is suitable for use in Western Blot, Immunohistochemistry, Immunofluorescence and ELISA research applications.
Applications	WB, IHC-P, IF-P, ELISA
Host/Source	Rabbit
Reactivity	Human, Mouse, Rat, Simian

PRODUCT PROPERTIES

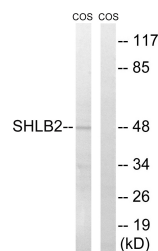
Clonality	Polyclonal
Clone ID	
Concentration	1 mg/mL
Conjugation	Unconjugated
Purification	The antibody was affinity-purified from rabbit anti-serum by affinity-chromatography.
Dilution Range	WB 1:500-1:2000 IHC 1:100-1:300 ELISA 1:40000
Formulation	PBS, 50% Glycerol, 0.5% BSA and 0.02% Sodium Azide.
Isotype	IgG
Storage Instruction	Store at -20°C for up to 1 year from the date of receipt, and avoid repeat freeze-thaw cycles.

TARGET INFORMATION

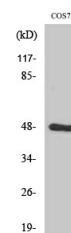
Gene ID	56904
Gene Symbol	SH3GLB2
Uniprot ID	SHLB2_HUMAN
Immunogen	The antiserum was produced against synthesized peptide derived from human SH3GLB2 at amino acid range 131-180
Immunogen Region	100-180 Internal
Specificity	SH3GLB2 polyclonal antibody (Endophilin-B2) binds to endogenous Endophilin-B2 at the amino acid region 100-180 Internal.
Immunogen Sequence	



Immunohistochemistry analysis of paraffin-embedded human prostate carcinoma tissue, using SH3GLB2 Antibody. The picture on the right is blocked with the synthesized peptide.



Western blot analysis of lysates from COS7 cells, using SH3GLB2 Antibody. The lane on the right is blocked with the synthesized peptide.



Western blot analysis of various cells using Endophilin B2 Polyclonal Antibody diluted at 1: 1000

This product is suitable for in-vitro studies under the RESEARCH USE ONLY [RUO] licence. This product must not be used as for diagnostic or other medical purposes.
St John's Laboratory Ltd, Knowledge Dock Business Centre, University Way, London, E16 2RD | Tel: 0208 223 3081