

Anti-EMCN antibody (180-260 C-Term) (STJ92922)

STJ92922

GENERAL INFORMATION

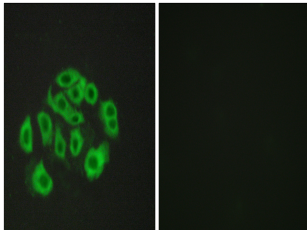
Product Type	Primary antibodies
Short Description	Rabbit polyclonal antibody anti-Endomucin (180-260 C-Term) is suitable for use in Immunofluorescence, Immunocytochemistry and ELISA research applications.
Applications	IF, ICC, ELISA
Host/Source	Rabbit
Reactivity	Human, Mouse, Rat

PRODUCT PROPERTIES

Clonality	Polyclonal
Clone ID	
Concentration	1 mg/mL
Conjugation	Unconjugated
Purification	The antibody was affinity-purified from rabbit anti-serum by affinity-chromatography.
Dilution Range	IF 1:200-1:1000 ELISA 1:5000
Formulation	PBS, 50% Glycerol, 0.5% BSA and 0.02% Sodium Azide.
Isotype	IgG
Storage	Store at -20°C for up to 1 year from the date of receipt, and avoid repeat freeze-thaw cycles.
Instruction	

TARGET INFORMATION

Gene ID	51705
Gene Symbol	EMCN
Uniprot ID	MUCEN_HUMAN
Immunogen	The antiserum was produced against synthesized peptide derived from human Mucin-14 at amino acid range 201-250
Immunogen Region	180-260 C-Term
Specificity	EMCN polyclonal antibody (Endomucin) binds to endogenous Endomucin at the amino acid region 180-260 C-Term.
Immunogen Sequence	



Immunofluorescence analysis of HepG2 cells, using Mucin-14 Antibody. The picture on the right is blocked with the synthesized peptide.