

Anti-OPN3 antibody (140-220 Internal) (STJ92919)

STJ92919

GENERAL INFORMATION

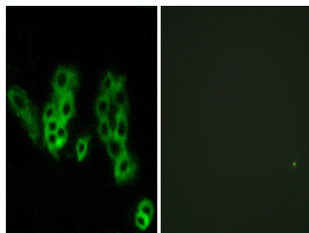
Product Type	Primary antibodies
Short Description	Rabbit polyclonal antibody anti-Opnin-3 (140-220 Internal) is suitable for use in Western Blot, Immunohistochemistry, Immunofluorescence, Immunocytochemistry and ELISA research applications.
Applications	WB, IHC-P, IF, ICC, ELISA
Host/Source	Rabbit
Reactivity	Human, Mouse

PRODUCT PROPERTIES

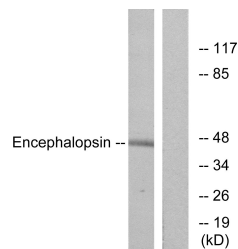
Clonality	Polyclonal
Clone ID	
Concentration	1 mg/mL
Conjugation	Unconjugated
Purification	The antibody was affinity-purified from rabbit anti-serum by affinity-chromatography.
Dilution Range	WB 1:500-1:2000 IHC 1:100-1:300 IF 1:200-1:1000 ELISA 1:5000
Formulation	PBS, 50% Glycerol, 0.5% BSA and 0.02% Sodium Azide.
Isotype	IgG
Storage Instruction	Store at -20°C for up to 1 year from the date of receipt, and avoid repeat freeze-thaw cycles.

TARGET INFORMATION

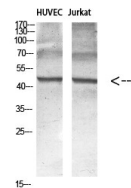
Gene ID	23596
Gene Symbol	OPN3
Uniprot ID	OPN3_HUMAN
Immunogen	The antiserum was produced against synthesized peptide derived from human Encephalopsin at amino acid range 161-210
Immunogen Region	140-220 Internal
Specificity	OPN3 polyclonal antibody (Opsin-3) binds to endogenous Opsin-3 at the amino acid region 140-220 Internal.
Immunogen Sequence	



Immunofluorescence analysis of MCF7 cells, using Encephalopsin Antibody. The picture on the right is blocked with the synthesized peptide.



Western blot analysis of lysates from mouse brain, using Encephalopsin Antibody. The lane on the right is blocked with the synthesized peptide.



Western blot analysis of various cell Lysate, antibody was diluted at 1:1000. Secondary antibody was diluted at 1:20000