

Anti-EMX1 antibody (150-230 C-Term) (STJ92914)

STJ92914

GENERAL INFORMATION

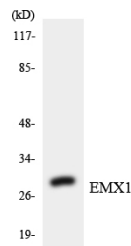
Product Type	Primary antibodies
Short Description	Rabbit polyclonal antibody anti-Homeobox Protein Emx1 (150-230 C-Term) is suitable for use in Western Blot and ELISA research applications.
Applications	WB, ELISA
Host/Source	Rabbit
Reactivity	Human, Mouse, Rat

PRODUCT PROPERTIES

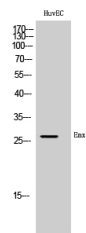
Clonality	Polyclonal
Clone ID	
Concentration	1 mg/mL
Conjugation	Unconjugated
Purification	The antibody was affinity-purified from rabbit anti-serum by affinity-chromatography.
Dilution Range	WB 1:500-1:2000 ELISA 1:40000
Formulation	PBS, 50% Glycerol, 0.5% BSA and 0.02% Sodium Azide.
Isotype	IgG
Storage Instruction	Store at -20°C for up to 1 year from the date of receipt, and avoid repeat freeze-thaw cycles.

TARGET INFORMATION

Gene ID	2016
Gene Symbol	EMX1
Uniprot ID	EMX1_HUMAN
Immunogen	The antiserum was produced against synthesized peptide derived from human EMX1 at amino acid range 181-230
Immunogen Region	150-230 C-Term
Specificity	EMX1 polyclonal antibody (Homeobox Protein Emx1) binds to endogenous Homeobox Protein Emx1 at the amino acid region 150-230 C-Term.
Immunogen Sequence	



Western blot analysis of the lysates from Jurkat cells using EMX1 antibody.



Western blot analysis of HuvEC cells using Emx1 Polyclonal Antibody cells nucleus extracted by Minute™ Cytoplasmic and Nuclear Fractionation kit (SC-003, InventiBiotech, MN, USA).

This product is suitable for in-vitro studies under the RESEARCH USE ONLY [RUO] licence. This product must not be used as for diagnostic or other medical purposes.
St John's Laboratory Ltd, Knowledge Dock Business Centre, University Way, London, E16 2RD | Tel: 0208 223 3081