

Anti-ADGRE3 antibody (580-660 C-Term) (STJ92912)

STJ92912

GENERAL INFORMATION

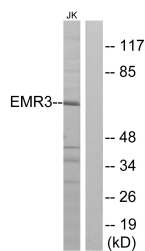
Product Type	Primary antibodies
Short Description	Rabbit polyclonal antibody anti-Adhesion G Protein-Coupled Receptor E3 (580-660 C-Term) is suitable for use in Western Blot, Immunofluorescence, Immunocytochemistry and ELISA research applications.
Applications	WB, IF, ICC, ELISA
Host/Source	Rabbit
Reactivity	Human, Rat, Mouse

PRODUCT PROPERTIES

Clonality	Polyclonal
Clone ID	
Concentration	1 mg/mL
Conjugation	Unconjugated
Purification	The antibody was affinity-purified from rabbit anti-serum by affinity-chromatography.
Dilution Range	WB 1:500-1:2000 IF 1:200-1:1000 ELISA 1:10000
Formulation	PBS, 50% Glycerol, 0.5% BSA and 0.02% Sodium Azide.
Isotype	IgG
Storage Instruction	Store at -20°C for up to 1 year from the date of receipt, and avoid repeat freeze-thaw cycles.

TARGET INFORMATION

Gene ID	84658
Gene Symbol	ADGRE3
Uniprot ID	AGRE3_HUMAN
Immunogen Region	The antiserum was produced against synthesized peptide derived from human EMR3 at amino acid range 603-652
Immunogen Region	580-660 C-Term
Specificity	ADGRE3 polyclonal antibody (Adhesion G Protein-Coupled Receptor E3) binds to endogenous Adhesion G Protein-Coupled Receptor E3 at the amino acid region 580-660 C-Term.
Immunogen Sequence	



Western blot analysis of lysates from Jurkat cells, using EMR3 Antibody. The lane on the right is blocked with the synthesized peptide.