

Anti-ADGRE2 antibody (740-820 C-Term) (STJ92911)

STJ92911

GENERAL INFORMATION

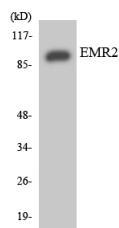
Product Type	Primary antibodies
Short Description	Rabbit polyclonal antibody anti-Adhesion G Protein-Coupled Receptor E2 (740-820 C-Term) is suitable for use in Western Blot, Immunofluorescence, Immunocytochemistry and ELISA research applications.
Applications	WB, IF, ICC, ELISA
Host/Source	Rabbit
Reactivity	Human, Rat, Mouse

PRODUCT PROPERTIES

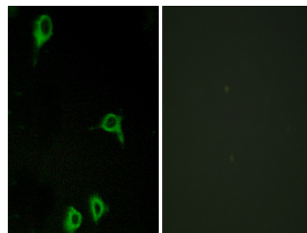
Clonality	Polyclonal
Clone ID	
Concentration	1 mg/mL
Conjugation	Unconjugated
Purification	The antibody was affinity-purified from rabbit anti-serum by affinity-chromatography.
Dilution Range	WB 1:500-1:2000 IF 1:200-1:1000 ELISA 1:20000
Formulation	PBS, 50% Glycerol, 0.5% BSA and 0.02% Sodium Azide.
Isotype	IgG
Storage Instruction	Store at -20°C for up to 1 year from the date of receipt, and avoid repeat freeze-thaw cycles.

TARGET INFORMATION

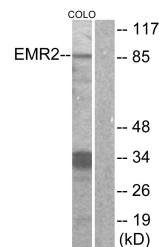
Gene ID	30817
Gene Symbol	ADGRE2
Uniprot ID	AGRE2_HUMAN
Immunogen	The antiserum was produced against synthesized peptide derived from human EMR2 at amino acid range 765-814
Immunogen Region	740-820 C-Term
Specificity	ADGRE2 polyclonal antibody (Adhesion G Protein-Coupled Receptor E2) binds to endogenous Adhesion G Protein-Coupled Receptor E2 at the amino acid region 740-820 C-Term.
Immunogen Sequence	



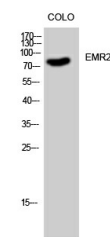
Western blot analysis of the lysates from HUVEC cells using EMR2 antibody.



Immunofluorescence analysis of COS7 cells, using EMR2 Antibody. The picture on the right is blocked with the synthesized peptide.



Western blot analysis of lysates from COLO cells, using EMR2 Antibody. The lane on the right is blocked with the synthesized peptide.



Western blot analysis of COLO cells using EMR2 Polyclonal Antibody.

This product is suitable for in-vitro studies under the RESEARCH USE ONLY [RUO] licence. This product must not be used as for diagnostic or other medical purposes.
 St John's Laboratory Ltd, Knowledge Dock Business Centre, University Way, London, E16 2RD | Tel: 0208 223 3081