

Anti-ADGRE1 antibody (790-870 C-Term) (STJ92909)

STJ92909

GENERAL INFORMATION

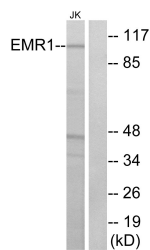
Product Type	Primary antibodies
Short Description	Rabbit polyclonal antibody anti-Adhesion G Protein-Coupled Receptor E1 (790-870 C-Term) is suitable for use in Western Blot and ELISA research applications.
Applications	WB, ELISA
Host/Source	Rabbit
Reactivity	Human, Rat, Mouse

PRODUCT PROPERTIES

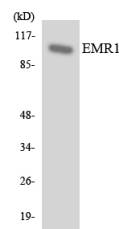
Clonality	Polyclonal
Clone ID	
Concentration	1 mg/mL
Conjugation	Unconjugated
Purification	The antibody was affinity-purified from rabbit anti-serum by affinity-chromatography.
Dilution Range	WB 1:500-1:2000 ELISA 1:5000
Formulation	PBS, 50% Glycerol, 0.5% BSA and 0.02% Sodium Azide.
Isotype	IgG
Storage	Store at -20°C for up to 1 year from the date of receipt, and avoid repeat freeze-thaw cycles.
Instruction	

TARGET INFORMATION

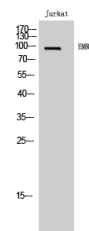
Gene ID	2015
Gene Symbol	ADGRE1
Uniprot ID	AGRE1_HUMAN
Immunogen	The antiserum was produced against synthesized peptide derived from human EMR1 at amino acid range 818-867
Immunogen Region	790-870 C-Term
Specificity	ADGRE1 polyclonal antibody (Adhesion G Protein-Coupled Receptor E1) binds to endogenous Adhesion G Protein-Coupled Receptor E1 at the amino acid region 790-870 C-Term.
Immunogen Sequence	



Western blot analysis of lysates from Jurkat cells, using EMR1 Antibody. The lane on the right is blocked with the synthesized peptide.



Western blot analysis of the lysates from HUVEC cells using EMR1 antibody.



Western blot analysis of Jurkat cells using EMR1 Polyclonal Antibody

This product is suitable for in-vitro studies under the RESEARCH USE ONLY [RUO] licence. This product must not be used as for diagnostic or other medical purposes.
St John's Laboratory Ltd, Knowledge Dock Business Centre, University Way, London, E16 2RD | Tel: 0208 223 3081