

Anti-EME1 antibody (250-330 Internal) (STJ92906)

STJ92906

GENERAL INFORMATION

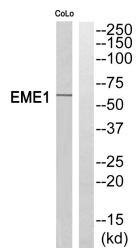
Product Type	Primary antibodies
Short Description	Rabbit polyclonal antibody anti-Crossover Junction Endonuclease Eme1 (250-330 Internal) is suitable for use in Western Blot and ELISA research applications.
Applications	WB, ELISA
Host/Source	Rabbit
Reactivity	Human, Rat, Mouse

PRODUCT PROPERTIES

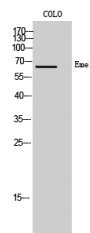
Clonality	Polyclonal
Clone ID	
Concentration	1 mg/mL
Conjugation	Unconjugated
Purification	The antibody was affinity-purified from rabbit anti-serum by affinity-chromatography.
Dilution Range	WB 1:500-1:2000 ELISA 1:5000
Formulation	PBS, 50% Glycerol, 0.5% BSA and 0.02% Sodium Azide.
Isotype	IgG
Storage Instruction	Store at -20°C for up to 1 year from the date of receipt, and avoid repeat freeze-thaw cycles.

TARGET INFORMATION

Gene ID	146956
Gene Symbol	EME1
Uniprot ID	EME1_HUMAN
Immunogen	Synthesized peptide derived from Eme1. at amino acid range: 250-330
Immunogen Region	250-330 Internal
Specificity	EME1 polyclonal antibody (Crossover Junction Endonuclease Eme1) binds to endogenous Crossover Junction Endonuclease Eme1 at the amino acid region 250-330 Internal.
Immunogen Sequence	



Western blot analysis of EME1 Antibody. The lane on the right is blocked with the EME1 peptide.



Western blot analysis of COLO cells using Eme1 Polyclonal Antibody cells nucleus extracted by Minute™ Cytoplasmic and Nuclear Fractionation kit (SC-003, Inventibiotech, MN, USA).

This product is suitable for in-vitro studies under the RESEARCH USE ONLY [RUO] licence. This product must not be used as for diagnostic or other medical purposes.
St John's Laboratory Ltd, Knowledge Dock Business Centre, University Way, London, E16 2RD | Tel: 0208 223 3081