

Anti-ELOVL6 antibody (40-120 Internal) (STJ92905)

STJ92905

GENERAL INFORMATION

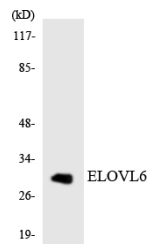
Product Type	Primary antibodies
Short Description	Rabbit polyclonal antibody anti-Elongation Of Very Long Chain Fatty Acids Protein 6 (40-120 Internal) is suitable for use in Western Blot and ELISA research applications.
Applications	WB, ELISA
Host/Source	Rabbit
Reactivity	Human, Mouse, Rat

PRODUCT PROPERTIES

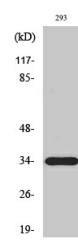
Clonality	Polyclonal
Clone ID	
Concentration	1 mg/mL
Conjugation	Unconjugated
Purification	The antibody was affinity-purified from rabbit anti-serum by affinity-chromatography.
Dilution	WB 1:500-1:2000
Range	ELISA 1:10000
Formulation	PBS, 50% Glycerol, 0.5% BSA and 0.02% Sodium Azide.
Isotype	IgG
Storage Instruction	Store at -20°C for up to 1 year from the date of receipt, and avoid repeat freeze-thaw cycles.

TARGET INFORMATION

Gene ID	79071
Gene Symbol	ELOVL6
Uniprot ID	ELOV6_HUMAN
Immunogen	The antiserum was produced against synthesized peptide derived from human ELOVL6 at amino acid range 21-70
Immunogen Region	40-120 Internal
Specificity	ELOVL6 polyclonal antibody (Elongation Of Very Long Chain Fatty Acids Protein 6) binds to endogenous Elongation Of Very Long Chain Fatty Acids Protein 6 at the amino acid region 40-120 Internal.
Immunogen Sequence	



Western blot analysis of the lysates from K562 cells using ELOVL6 antibody.



Western blot analysis of various cells using ELOVL6 Polyclonal Antibody

This product is suitable for in-vitro studies under the RESEARCH USE ONLY [RUO] licence. This product must not be used as for diagnostic or other medical purposes.
 St John's Laboratory Ltd, Knowledge Dock Business Centre, University Way, London, E16 2RD | Tel: 0208 223 3081