

Anti-ELOVL5 antibody (210-290 C-Term) (STJ92904)

STJ92904

GENERAL INFORMATION

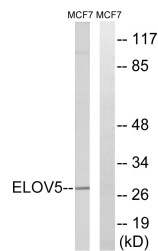
Product Type	Primary antibodies
Short Description	Rabbit polyclonal antibody anti-Elongation Of Very Long Chain Fatty Acids Protein 5 (210-290 C-Term) is suitable for use in Western Blot, Immunohistochemistry, Immunofluorescence and ELISA research applications.
Applications	WB, IHC-P, IF-P, ELISA
Host/Source	Rabbit
Reactivity	Human, Rat, Mouse

PRODUCT PROPERTIES

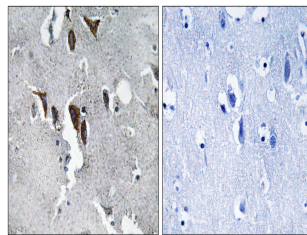
Clonality	Polyclonal
Clone ID	
Concentration	1 mg/mL
Conjugation	Unconjugated
Purification	The antibody was affinity-purified from rabbit anti-serum by affinity-chromatography.
Dilution Range	WB 1:500-1:2000 IHC 1:100-1:300 ELISA 1:40000
Formulation	PBS, 50% Glycerol, 0.5% BSA and 0.02% Sodium Azide.
Isotype	IgG
Storage Instruction	Store at -20°C for up to 1 year from the date of receipt, and avoid repeat freeze-thaw cycles.

TARGET INFORMATION

Gene ID	60481
Gene Symbol	ELOVL5
Uniprot ID	ELOV5_HUMAN
Immunogen	The antiserum was produced against synthesized peptide derived from human ELOVL5 at amino acid range 250-299
Immunogen Region	210-290 C-Term
Specificity	ELOVL5 polyclonal antibody (Elongation Of Very Long Chain Fatty Acids Protein 5) binds to endogenous Elongation Of Very Long Chain Fatty Acids Protein 5 at the amino acid region 210-290 C-Term.
Immunogen Sequence	



Western blot analysis of lysates from MCF-7 cells, using ELOVL5 Antibody. The lane on the right is blocked with the synthesized peptide.



Immunohistochemistry analysis of paraffin-embedded human brain tissue, using ELOVL5 Antibody. The picture on the right is blocked with the synthesized peptide.