

Anti-ELOVL4 antibody (10-90 Internal) (STJ92903)

STJ92903

GENERAL INFORMATION

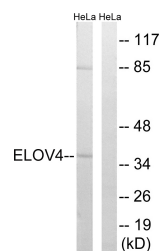
Product Type	Primary antibodies
Short Description	Rabbit polyclonal antibody anti-Elongation Of Very Long Chain Fatty Acids Protein 4 (10-90 Internal) is suitable for use in Western Blot and ELISA research applications.
Applications	WB, ELISA
Host/Source	Rabbit
Reactivity	Human, Mouse

PRODUCT PROPERTIES

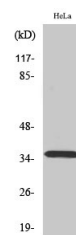
Clonality	Polyclonal
Clone ID	
Concentration	1 mg/mL
Conjugation	Unconjugated
Purification	The antibody was affinity-purified from rabbit anti-serum by affinity-chromatography.
Dilution	WB 1:500-1:2000
Range	ELISA 1:40000
Formulation	PBS, 50% Glycerol, 0.5% BSA and 0.02% Sodium Azide.
Isotype	IgG
Storage	Store at -20°C for up to 1 year from the date of receipt, and avoid repeat freeze-thaw cycles.
Instruction	

TARGET INFORMATION

Gene ID	6785
Gene Symbol	ELOVL4
Uniprot ID	ELOV4_HUMAN
Immunogen	The antiserum was produced against synthesized peptide derived from human ELOVL4 at amino acid range 41-90
Immunogen Region	10-90 Internal
Specificity	ELOVL4 polyclonal antibody (Elongation Of Very Long Chain Fatty Acids Protein 4) binds to endogenous Elongation Of Very Long Chain Fatty Acids Protein 4 at the amino acid region 10-90 Internal.
Immunogen Sequence	



Western blot analysis of lysates from HeLa cells, using ELOVL4 Antibody. The lane on the right is blocked with the synthesized peptide.



Western blot analysis of various cells using ELOVL4 Polyclonal Antibody diluted at 1: 1000