

Anti-ELK1 antibody (320-400) (STJ92892)

STJ92892

GENERAL INFORMATION

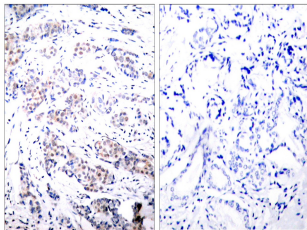
Product Type	Primary antibodies
Short Description	Rabbit polyclonal antibody anti-Ets Domain-Containing Protein Elk-1 (320-400) is suitable for use in Western Blot, Immunohistochemistry, Immunofluorescence, Immunoprecipitation and ELISA research applications.
Applications	WB, IHC-P, IF-P, IP, ELISA
Host/Source	Rabbit
Reactivity	Human, Mouse, Rat

PRODUCT PROPERTIES

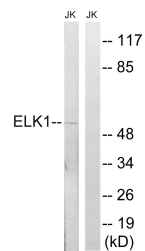
Clonality	Polyclonal
Clone ID	
Concentration	1 mg/mL
Conjugation	Unconjugated
Purification	The antibody was affinity-purified from rabbit anti-serum by affinity-chromatography.
Dilution Range	WB 1:500-1:2000 IHC 1:100-1:300 IP 2-5 ug/mg ELISA 1:10000
Formulation	PBS, 50% Glycerol, 0.5% BSA and 0.02% Sodium Azide.
Isotype	IgG
Storage Instruction	Store at -20°C for up to 1 year from the date of receipt, and avoid repeat freeze-thaw cycles.

TARGET INFORMATION

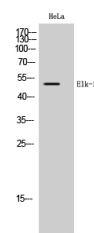
Gene ID	2002
Gene Symbol	ELK1
Uniprot ID	ELK1_HUMAN
Immunogen	The antiserum was produced against synthesized peptide derived from human Elk1 at amino acid range 351-400
Immunogen Region	320-400
Specificity	ELK1 polyclonal antibody (Ets Domain-Containing Protein Elk-1) binds to endogenous Ets Domain-Containing Protein Elk-1 at the amino acid region 320-400.
Immunogen Sequence	



Immunohistochemistry analysis of paraffin-embedded human breast carcinoma tissue, using Elk1 Antibody. The picture on the right is blocked with the synthesized peptide.



Western blot analysis of lysates from JurKat cells, using Elk1 Antibody. The lane on the right is blocked with the synthesized peptide.



Western blot analysis of HeLa cells using Elk-1 Polyclonal Antibody cells nucleus extracted by Minute™ Cytoplasmic and Nuclear Fractionation kit (SC-003, InventorTech, MN, USA).

This product is suitable for in-vitro studies under the RESEARCH USE ONLY [RUO] licence. This product must not be used as for diagnostic or other medical purposes.
St John's Laboratory Ltd, Knowledge Dock Business Centre, University Way, London, E16 2RD | Tel: 0208 223 3081