

Anti-ELF4 antibody (150-230 Internal) (STJ92889)

STJ92889

GENERAL INFORMATION

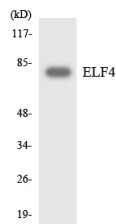
Product Type	Primary antibodies
Short Description	Rabbit polyclonal antibody anti-Ets-Related Transcription Factor Elf-4 (150-230 Internal) is suitable for use in Western Blot and ELISA research applications.
Applications	WB, ELISA
Host/Source	Rabbit
Reactivity	Human, Mouse

PRODUCT PROPERTIES

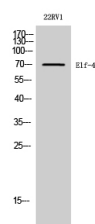
Clonality	Polyclonal
Clone ID	
Concentration	1 mg/mL
Conjugation	Unconjugated
Purification	The antibody was affinity-purified from rabbit anti-serum by affinity-chromatography.
Dilution Range	WB 1:500-1:2000 ELISA 1:10000
Formulation	PBS, 50% Glycerol, 0.5% BSA and 0.02% Sodium Azide.
Isotype	IgG
Storage Instruction	Store at -20°C for up to 1 year from the date of receipt, and avoid repeat freeze-thaw cycles.

TARGET INFORMATION

Gene ID	2000
Gene Symbol	ELF4
Uniprot ID	ELF4_HUMAN
Immunogen	The antiserum was produced against synthesized peptide derived from human ELF4 at amino acid range 178-227
Immunogen Region	150-230 Internal
Specificity	ELF4 polyclonal antibody (Ets-Related Transcription Factor Elf-4) binds to endogenous Ets-Related Transcription Factor Elf-4 at the amino acid region 150-230 Internal.
Immunogen Sequence	



Western blot analysis of the lysates from RAW264.7 cells using ELF4 antibody.



Western blot analysis of 22RV1 cells using Elf-4 Polyclonal Antibody diluted at 1:2000 cells nucleus extracted by Minute TM Cytoplasmic and Nuclear Fractionation kit (SC-003, Inventibiotec, MN, USA).

This product is suitable for in-vitro studies under the RESEARCH USE ONLY [RUO] licence. This product must not be used as for diagnostic or other medical purposes.
St John's Laboratory Ltd, Knowledge Dock Business Centre, University Way, London, E16 2RD | Tel: 0208 223 3081