

## Anti-ELF1 antibody (510-590 C-Term) (STJ92888)

STJ92888

### GENERAL INFORMATION

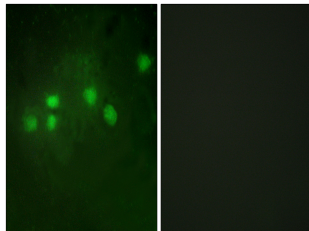
<b>Product Type</b>	Primary antibodies
<b>Short Description</b>	Rabbit polyclonal antibody anti-Ets-Related Transcription Factor Elf-1 (510-590 C-Term) is suitable for use in Western Blot, Immunohistochemistry, Immunofluorescence, Immunocytochemistry and ELISA research applications.
<b>Applications</b>	WB, IHC-P, IF, ICC, ELISA
<b>Host/Source</b>	Rabbit
<b>Reactivity</b>	Human, Rat, Mouse

### PRODUCT PROPERTIES

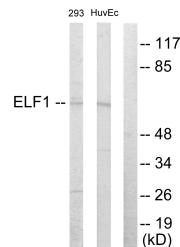
<b>Clonality</b>	Polyclonal
<b>Clone ID</b>	
<b>Concentration</b>	1 mg/mL
<b>Conjugation</b>	Unconjugated
<b>Purification</b>	The antibody was affinity-purified from rabbit anti-serum by affinity-chromatography.
<b>Dilution Range</b>	WB 1:500-1:2000 IHC 1:100-1:300 IF 1:200-1:1000 ELISA 1:20000
<b>Formulation</b>	PBS, 50% Glycerol, 0.5% BSA and 0.02% Sodium Azide.
<b>Isotype</b>	IgG
<b>Storage Instruction</b>	Store at -20°C for up to 1 year from the date of receipt, and avoid repeat freeze-thaw cycles.

### TARGET INFORMATION

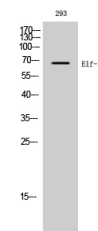
<b>Gene ID</b>	1997
<b>Gene Symbol</b>	ELF1
<b>Uniprot ID</b>	ELF1_HUMAN
<b>Immunogen</b>	The antiserum was produced against synthesized peptide derived from human ELF1 at amino acid range 537-586
<b>Immunogen Region</b>	510-590 C-Term
<b>Specificity</b>	ELF1 polyclonal antibody (Ets-Related Transcription Factor Elf-1) binds to endogenous Ets-Related Transcription Factor Elf-1 at the amino acid region 510-590 C-Term.
<b>Immunogen Sequence</b>	



Immunofluorescence analysis of A549 cells, using ELF1 Antibody. The picture on the right is blocked with the synthesized peptide.



Western blot analysis of lysates from 293 and HUVEC cells, using ELF1 Antibody. The lane on the right is blocked with the synthesized peptide.



Western blot analysis of 293 cells using ELF-1 Polyclonal Antibody diluted at 1: 1000

This product is suitable for in-vitro studies under the RESEARCH USE ONLY [RUO] licence. This product must not be used as for diagnostic or other medical purposes.  
St John's Laboratory Ltd, Knowledge Dock Business Centre, University Way, London, E16 2RD | Tel: 0208 223 3081