

Anti-EKLF/CKLF/UKLF antibody (280-360 C-Term) (STJ92887)

STJ92887

GENERAL INFORMATION

Product Type	Primary antibodies
Short Description	Rabbit polyclonal antibody anti-Krueppel-like factor 1 and Krueppel-like factor 5 and Krueppel-like factor 7 (280-360 C-Term) is suitable for use in Western Blot, Immunofluorescence, Immunocytochemistry and ELISA research applications.
Applications	WB, IF, ICC, ELISA
Host/Source	Rabbit
Reactivity	Human, Mouse, Rat

PRODUCT PROPERTIES

Clonality	Polyclonal
Clone ID	
Concentration	1 mg/mL
Conjugation	Unconjugated
Purification	The antibody was affinity-purified from rabbit anti-serum by affinity-chromatography.
Dilution Range	WB 1:500-1:2000 IF 1:200-1:1000 ELISA 1:20000
Formulation	PBS, 50% Glycerol, 0.5% BSA and 0.02% Sodium Azide.
Isotype	IgG
Storage Instruction	Store at 20°C for up to 1 year from the date of receipt, and avoid repeat freeze-thaw cycles.

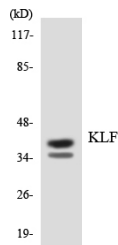
TARGET INFORMATION

Gene ID [8609](#)
[688](#)
[10661](#)
[KLF7](#)
[KLF5](#)
[KLF7_HUMAN](#)
[KLF5_HUMAN](#)
[KLF1_HUMAN](#)
 <

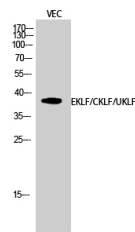
Immunogen The antiserum was produced against synthesized peptide derived from human KLF at amino acid range 291-340
Immunogen Region 280-360 C-Term

Specificity EKLF/CKLF/UKLF polyclonal antibody (Krueppel-like factor 1 and Krueppel-like factor 5 and Krueppel-like factor 7) binds to endogenous Krueppel-like factor 1 and Krueppel-like factor 5 and Krueppel-like factor 7 at the amino acid region 280-360 C-Term

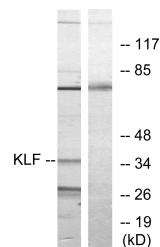
Immunogen Sequence



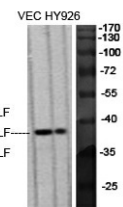
Western blot analysis of the lysates from K562 cells using KLF antibody.



Western blot analysis of VEC cells using EKLF/CKLF/UKLF Polyclonal Antibody diluted at 1:500 cells nucleus extracted by Minute TM Cytoplasmic and Nuclear Fractionation kit (SC-003, Inventibiotech, MN, USA).



Western blot analysis of lysates from Jurkat cells, treated with serum 20% 15', using KLF Antibody. The lane on the right is blocked with the synthesized peptide.



Western blot analysis of various cells using EKLF/CKLF/UKLF Polyclonal Antibody diluted at 1:500 cells nucleus extracted by Minute TM Cytoplasmic and Nuclear Fractionation kit (SC-003, Inventibiotech, MN, USA).

This product is suitable for in-vitro studies under the RESEARCH USE ONLY [RUO] licence. This product must not be used as for diagnostic or other medical purposes.
 St John's Laboratory Ltd, Knowledge Dock Business Centre, University Way, London, E16 2RD | Tel: 0208 223 3081