

Anti-EIF4E3 antibody (110-190 Internal) (STJ92882)

STJ92882

GENERAL INFORMATION

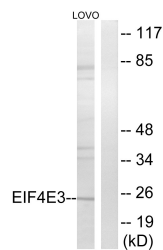
Product Type	Primary antibodies
Short Description	Rabbit polyclonal antibody anti-Eukaryotic Translation Initiation Factor 4e Type 3 (110-190 Internal) is suitable for use in Western Blot and ELISA research applications.
Applications	WB, ELISA
Host/Source	Rabbit
Reactivity	Human, Mouse, Rat

PRODUCT PROPERTIES

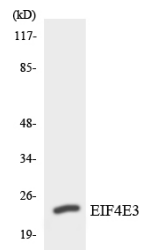
Clonality	Polyclonal
Clone ID	
Concentration	1 mg/mL
Conjugation	Unconjugated
Purification	The antibody was affinity-purified from rabbit anti-serum by affinity-chromatography.
Dilution Range	WB 1:500-1:2000 ELISA 1:10000
Formulation	PBS, 50% Glycerol, 0.5% BSA and 0.02% Sodium Azide.
Isotype	IgG
Storage	Store at -20°C for up to 1 year from the date of receipt, and avoid repeat freeze-thaw cycles.
Instruction	

TARGET INFORMATION

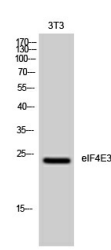
Gene ID	317649
Gene Symbol	EIF4E3
Uniprot ID	IF4E3_HUMAN
Immunogen	The antiserum was produced against synthesized peptide derived from human EIF4E3 at amino acid range 141-190
Immunogen Region	110-190 Internal
Specificity	EIF4E3 polyclonal antibody (Eukaryotic Translation Initiation Factor 4e Type 3) binds to endogenous Eukaryotic Translation Initiation Factor 4e Type 3 at the amino acid region 110-190 Internal.
Immunogen Sequence	



Western blot analysis of lysates from LOVO cells, using EIF4E3 Antibody. The lane on the right is blocked with the synthesized peptide.



Western blot analysis of the lysates from HepG2 cells using EIF4E3 antibody.



Western blot analysis of 3T3 cells using eIF4E3 Polyclonal Antibody diluted at 1: 1000