

Anti-EIF4E antibody (140-220) (STJ92881)

STJ92881

GENERAL INFORMATION

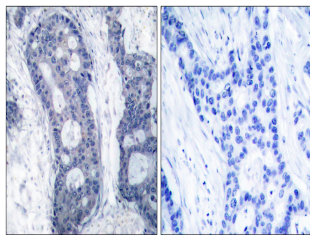
Product Type	Primary antibodies
Short Description	Rabbit polyclonal antibody anti-Eukaryotic Translation Initiation Factor 4e (140-220) is suitable for use in Western Blot, Immunohistochemistry, Immunofluorescence and ELISA research applications.
Applications	WB, IHC-P, IF-P, ELISA
Host/Source	Rabbit
Reactivity	Human, Mouse, Rat, Simian

PRODUCT PROPERTIES

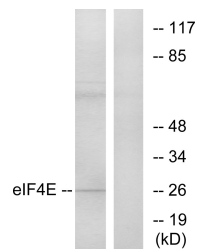
Clonality	Polyclonal
Clone ID	
Concentration	1 mg/mL
Conjugation	Unconjugated
Purification	The antibody was affinity-purified from rabbit anti-serum by affinity-chromatography.
Dilution Range	WB 1:500-1:2000 IHC 1:100-1:300 ELISA 1:10000
Formulation	PBS, 50% Glycerol, 0.5% BSA and 0.02% Sodium Azide.
Isotype	IgG
Storage Instruction	Store at -20°C for up to 1 year from the date of receipt, and avoid repeat freeze-thaw cycles.

TARGET INFORMATION

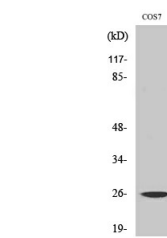
Gene ID	1977
Gene Symbol	EIF4E
Uniprot ID	IF4E_HUMAN
Immunogen	The antiserum was produced against synthesized peptide derived from human eIF4E at amino acid range 168-217
Immunogen Region	140-220
Specificity	EIF4E polyclonal antibody (Eukaryotic Translation Initiation Factor 4e) binds to endogenous Eukaryotic Translation Initiation Factor 4e at the amino acid region 140-220.
Immunogen Sequence	



Immunohistochemistry analysis of paraffin-embedded human breast carcinoma tissue, using eIF4E Antibody. The picture on the right is blocked with the synthesized peptide.



Western blot analysis of lysates from NIH/3T3 cells, treated with FBS, using eIF4E Antibody. The lane on the right is blocked with the synthesized peptide.



Western blot analysis of various cells using eIF4E Polyclonal Antibody diluted at 1: 1000