

## Anti-EIF4B antibody (360-440) (STJ92880)

STJ92880

### GENERAL INFORMATION

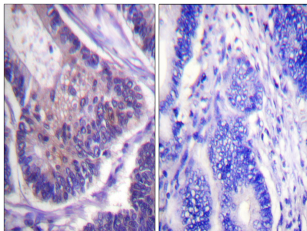
|                          |   |
|--------------------------|---|
| <b>Product Type</b>      | Primary antibodies  |
| <b>Short Description</b> | Rabbit polyclonal antibody anti-Eukaryotic Translation Initiation Factor 4b (360-440) is suitable for use in Western Blot, Immunohistochemistry, Immunofluorescence, Immunocytochemistry and ELISA research applications. |
| <b>Applications</b>      | WB, IHC-P, IF, ICC, ELISA   |
| <b>Host/Source</b>       | Rabbit  |
| <b>Reactivity</b>        | Human, Mouse  |

### PRODUCT PROPERTIES

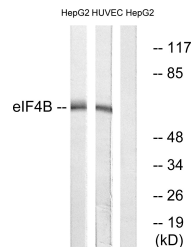
|                            |  |
|----------------------------|--|
| <b>Clonality</b>           | Polyclonal   |
| <b>Clone ID</b>            |  |
| <b>Concentration</b>       | 1 mg/mL  |
| <b>Conjugation</b>         | Unconjugated   |
| <b>Purification</b>        | The antibody was affinity-purified from rabbit anti-serum by affinity-chromatography.          |
| <b>Dilution Range</b>      | WB 1:500-1:2000<br>IHC 1:100-1:300<br>IF 1:200-1:1000<br>ELISA 1:5000                          |
| <b>Formulation</b>         | PBS, 50% Glycerol, 0.5% BSA and 0.02% Sodium Azide.  |
| <b>Isotype</b>             | IgG  |
| <b>Storage Instruction</b> | Store at -20°C for up to 1 year from the date of receipt, and avoid repeat freeze-thaw cycles. |

### TARGET INFORMATION

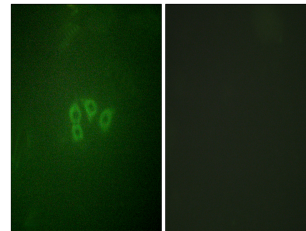
|                           |   |
|---------------------------|---|
| <b>Gene ID</b>            | 1975  |
| <b>Gene Symbol</b>        | EIF4B   |
| <b>Uniprot ID</b>         | IF4B_HUMAN  |
| <b>Immunogen</b>          | The antiserum was produced against synthesized peptide derived from human eIF4B at amino acid range 388-437   |
| <b>Immunogen Region</b>   | 360-440   |
| <b>Specificity</b>        | EIF4B polyclonal antibody (Eukaryotic Translation Initiation Factor 4b) binds to endogenous Eukaryotic Translation Initiation Factor 4b at the amino acid region 360-440. |
| <b>Immunogen Sequence</b> |   |



Immunohistochemistry analysis of paraffin-embedded human colon carcinoma tissue, using eIF4B Antibody. The picture on the right is blocked with the synthesized peptide.



Western blot analysis of lysates from HepG2 and HUVEC cells, using eIF4B Antibody. The lane on the right is blocked with the synthesized peptide.



Immunofluorescence analysis of A549 cells, using eIF4B Antibody. The picture on the right is blocked with the synthesized peptide.

This product is suitable for in-vitro studies under the RESEARCH USE ONLY [RUO] licence. This product must not be used as for diagnostic or other medical purposes.  
St John's Laboratory Ltd, Knowledge Dock Business Centre, University Way, London, E16 2RD | Tel: 0208 223 3081