

Anti-EIF3D antibody (70-150 Internal) (STJ92879)

STJ92879

GENERAL INFORMATION

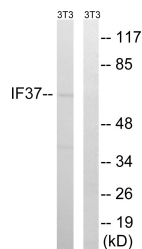
Product Type	Primary antibodies
Short Description	Rabbit polyclonal antibody anti-Eukaryotic Translation Initiation Factor 3 Subunit D (70-150 Internal) is suitable for use in Western Blot, Immunohistochemistry, Immunofluorescence and ELISA research applications.
Applications	WB, IHC-P, IF-P, ELISA
Host/Source	Rabbit
Reactivity	Human, Mouse

PRODUCT PROPERTIES

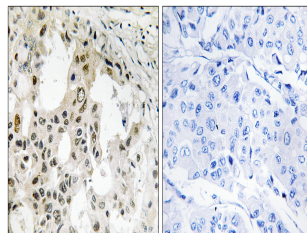
Clonality	Polyclonal
Clone ID	
Concentration	1 mg/mL
Conjugation	Unconjugated
Purification	The antibody was affinity-purified from rabbit anti-serum by affinity-chromatography.
Dilution Range	WB 1:500-1:2000 IHC 1:100-1:300 ELISA 1:40000
Formulation	PBS, 50% Glycerol, 0.5% BSA and 0.02% Sodium Azide.
Isotype	IgG
Storage Instruction	Store at -20°C for up to 1 year from the date of receipt, and avoid repeat freeze-thaw cycles.

TARGET INFORMATION

Gene ID	8664
Gene Symbol	EIF3D
Uniprot ID	EIF3D_HUMAN
Immunogen Region	The antiserum was produced against synthesized peptide derived from human EIF3D at amino acid range 101-150 70-150 Internal
Specificity	EIF3D polyclonal antibody (Eukaryotic Translation Initiation Factor 3 Subunit D) binds to endogenous Eukaryotic Translation Initiation Factor 3 Subunit D at the amino acid region 70-150 Internal.
Immunogen Sequence	



Western blot analysis of lysates from NIH/3T3 cells, using EIF3D Antibody. The lane on the right is blocked with the synthesized peptide.



Immunohistochemistry analysis of paraffin-embedded human breast carcinoma tissue, using EIF3D Antibody. The picture on the right is blocked with the synthesized peptide.