

## Anti-EIF2B4 antibody (200-280 Internal) (STJ92871)

STJ92871

### GENERAL INFORMATION

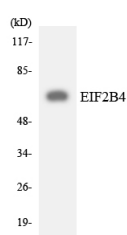
|                          |  |
|--------------------------|--|
| <b>Product Type</b>      | Primary antibodies   |
| <b>Short Description</b> | Rabbit polyclonal antibody anti-Translation Initiation Factor Eif-2b Subunit Delta (200-280 Internal) is suitable for use in Western Blot and ELISA research applications. |
| <b>Applications</b>      | WB, ELISA  |
| <b>Host/Source</b>       | Rabbit   |
| <b>Reactivity</b>        | Human, Mouse, Rat  |

### PRODUCT PROPERTIES

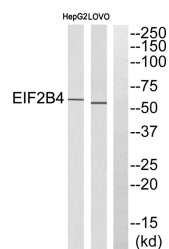
|                            |  |
|----------------------------|--|
| <b>Clonality</b>           | Polyclonal   |
| <b>Clone ID</b>            |  |
| <b>Concentration</b>       | 1 mg/mL  |
| <b>Conjugation</b>         | Unconjugated   |
| <b>Purification</b>        | The antibody was affinity-purified from rabbit anti-serum by affinity-chromatography.          |
| <b>Dilution Range</b>      | WB 1:500-1:2000<br>ELISA 1:5000  |
| <b>Formulation</b>         | PBS, 50% Glycerol, 0.5% BSA and 0.02% Sodium Azide.  |
| <b>Isotype</b>             | IgG  |
| <b>Storage Instruction</b> | Store at -20°C for up to 1 year from the date of receipt, and avoid repeat freeze-thaw cycles. |

### TARGET INFORMATION

|                           |   |
|---------------------------|---|
| <b>Gene ID</b>            | 8890  |
| <b>Gene Symbol</b>        | EIF2B4  |
| <b>Uniprot ID</b>         | EI2BD_HUMAN   |
| <b>Immunogen</b>          | The antiserum was produced against synthesized peptide derived from human EIF2B4 at amino acid range 226-275  |
| <b>Immunogen Region</b>   | 200-280 Internal  |
| <b>Specificity</b>        | EIF2B4 polyclonal antibody (Translation Initiation Factor Eif-2b Subunit Delta) binds to endogenous Translation Initiation Factor Eif-2b Subunit Delta at the amino acid region 200-280 Internal. |
| <b>Immunogen Sequence</b> |   |



Western blot analysis of the lysates from HeLa cells using EIF2B4 antibody.



Western blot analysis of EIF2B4 Antibody. The lane on the right is blocked with the EIF2B4 peptide.

This product is suitable for in-vitro studies under the RESEARCH USE ONLY [RUO] licence. This product must not be used as for diagnostic or other medical purposes.  
 St John's Laboratory Ltd, Knowledge Dock Business Centre, University Way, London, E16 2RD | Tel: 0208 223 3081