

Anti-EIF2B3 antibody (240-320 Internal) (STJ92870)

STJ92870

GENERAL INFORMATION

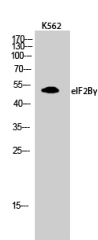
Product Type	Primary antibodies
Short Description	Rabbit polyclonal antibody anti-Translation Initiation Factor Eif-2b Subunit Gamma (240-320 Internal) is suitable for use in Western Blot and ELISA research applications.
Applications	WB, ELISA
Host/Source	Rabbit
Reactivity	Human, Mouse

PRODUCT PROPERTIES

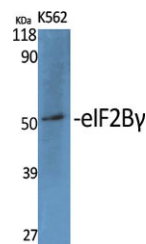
Clonality	Polyclonal
Clone ID	
Concentration	1 mg/mL
Conjugation	Unconjugated
Purification	The antibody was affinity-purified from rabbit anti-serum by affinity-chromatography.
Dilution Range	WB 1:500-1:2000 ELISA 1:5000
Formulation	PBS, 50% Glycerol, 0.5% BSA and 0.02% Sodium Azide.
Isotype	IgG
Storage Instruction	Store at -20°C for up to 1 year from the date of receipt, and avoid repeat freeze-thaw cycles.

TARGET INFORMATION

Gene ID	8891
Gene Symbol	EIF2B3
Uniprot ID	E12BG_HUMAN
Immunogen	Synthesized peptide derived from eIF2B Gamma. at amino acid range: 240-320
Immunogen Region	240-320 Internal
Specificity	EIF2B3 polyclonal antibody (Translation Initiation Factor Eif-2b Subunit Gamma) binds to endogenous Translation Initiation Factor Eif-2b Subunit Gamma at the amino acid region 240-320 Internal.
Immunogen Sequence	



Western blot analysis of K562 cells using eIF2B Gamma Polyclonal Antibody diluted at 1: 1000



Western blot analysis of various cells using eIF2B Gamma Polyclonal Antibody diluted at 1: 1000

This product is suitable for in-vitro studies under the RESEARCH USE ONLY [RUO] licence. This product must not be used as for diagnostic or other medical purposes.
St John's Laboratory Ltd, Knowledge Dock Business Centre, University Way, London, E16 2RD | Tel: 0208 223 3081