

Anti-EID1 antibody (40-120 Internal) (STJ92867)

STJ92867

GENERAL INFORMATION

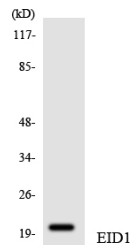
Product Type	Primary antibodies
Short Description	Rabbit polyclonal antibody anti-Ep300-Interacting Inhibitor Of Differentiation 1 (40-120 Internal) is suitable for use in Western Blot, Immunohistochemistry, Immunofluorescence, Immunocytochemistry and ELISA research applications.
Applications	WB, IHC-P, IF, ICC, ELISA
Host/Source	Rabbit
Reactivity	Human, Rat, Mouse

PRODUCT PROPERTIES

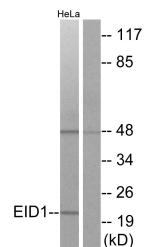
Clonality	Polyclonal
Clone ID	
Concentration	1 mg/mL
Conjugation	Unconjugated
Purification	The antibody was affinity-purified from rabbit anti-serum by affinity-chromatography.
Dilution	WB 1:500-1:2000
Range	IHC 1:100-1:300 IF 1:200-1:1000 ELISA 1:10000
Formulation	PBS, 50% Glycerol, 0.5% BSA and 0.02% Sodium Azide.
Isotype	IgG
Storage Instruction	Store at -20°C for up to 1 year from the date of receipt, and avoid repeat freeze-thaw cycles.

TARGET INFORMATION

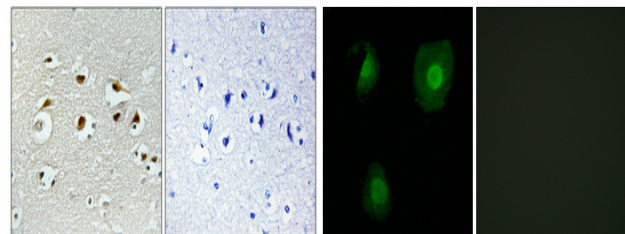
Gene ID	23741
Gene Symbol	EID1
Uniprot ID	EID1_HUMAN
Immunogen	The antiserum was produced against synthesized peptide derived from human EID1 at amino acid range 71-120
Immunogen Region	40-120 Internal
Specificity	EID1 polyclonal antibody (Ep300-Interacting Inhibitor Of Differentiation 1) binds to endogenous Ep300-Interacting Inhibitor Of Differentiation 1 at the amino acid region 40-120 Internal.
Immunogen Sequence	



Western blot analysis of the lysates from HUVEC cells using EID1 antibody.



Western blot analysis of lysates from HeLa cells, using EID1 Antibody. The lane on the right is blocked with the synthesized peptide.



Immunohistochemical analysis of paraffin-embedded Human brain. Antibody was diluted at 1:100 (4°C overnight). High-pressure and temperature Tris-EDTA, pH8.0 was used for antigen retrieval. Negative control (right) obtained from antibody was pre-absorbed by immunogen peptide.

Immunofluorescence analysis of A549 cells, using EID1 Antibody. The picture on the right is blocked with the synthesized peptide.

This product is suitable for in-vitro studies under the RESEARCH USE ONLY [RUO] licence. This product must not be used as for diagnostic or other medical purposes.
St John's Laboratory Ltd, Knowledge Dock Business Centre, University Way, London, E16 2RD | Tel: 0208 223 3081