

Anti-HAND1 antibody (110-190 C-Term) (STJ92865)

STJ92865

GENERAL INFORMATION

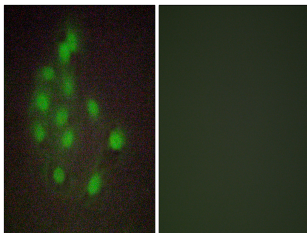
Product Type	Primary antibodies
Short Description	Rabbit polyclonal antibody anti-Heart-And Neural Crest Derivatives-Expressed Protein 1 (110-190 C-Term) is suitable for use in Immunofluorescence, Immunocytochemistry and ELISA research applications.
Applications	IF, ICC, ELISA
Host/Source	Rabbit
Reactivity	Human, Mouse, Rat

PRODUCT PROPERTIES

Clonality	Polyclonal
Clone ID	
Concentration	1 mg/mL
Conjugation	Unconjugated
Purification	The antibody was affinity-purified from rabbit anti-serum by affinity-chromatography.
Dilution	IF 1:200-1:1000
Range	ELISA 1:10000
Formulation	PBS, 50% Glycerol, 0.5% BSA and 0.02% Sodium Azide.
Isotype	IgG
Storage	Store at -20°C for up to 1 year from the date of receipt, and avoid repeat freeze-thaw cycles.
Instruction	

TARGET INFORMATION

Gene ID	9421
Gene Symbol	HAND1
Uniprot ID	HAND1_HUMAN
Immunogen	The antiserum was produced against synthesized peptide derived from human HAND1 at amino acid range 141-190
Immunogen Region	110-190 C-Term
Specificity	HAND1 polyclonal antibody (Heart-And Neural Crest Derivatives-Expressed Protein 1) binds to endogenous Heart-And Neural Crest Derivatives-Expressed Protein 1 at the amino acid region 110-190 C-Term.
Immunogen Sequence	



Immunofluorescence analysis of A549 cells, using HAND1 Antibody. The picture on the right is blocked with the synthesized peptide.