

Anti-EGFR antibody (960-1040) (STJ92862)

STJ92862

GENERAL INFORMATION

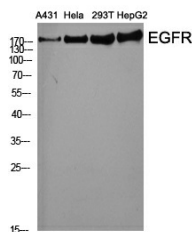
Product Type	Primary antibodies
Short Description	Rabbit polyclonal antibody anti-Epidermal Growth Factor Receptor (960-1040) is suitable for use in Western Blot, Immunohistochemistry, Immunofluorescence, Immunocytochemistry and ELISA research applications.
Applications	WB, IHC-P, IF, ICC, ELISA
Host/Source	Rabbit
Reactivity	Human, Mouse, Rat

PRODUCT PROPERTIES

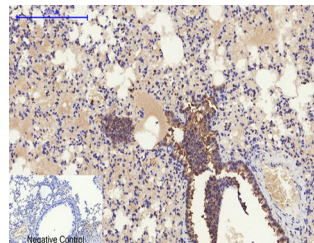
Clonality	Polyclonal
Clone ID	
Concentration	1 mg/mL
Conjugation	Unconjugated
Purification	The antibody was affinity-purified from rabbit anti-serum by affinity-chromatography.
Dilution Range	WB 1:500-1:2000 IHC 1:100-1:300 IF 1:200-1:1000 ELISA 1:5000
Formulation	PBS, 50% Glycerol, 0.5% BSA and 0.02% Sodium Azide.
Isotype	IgG
Storage Instruction	Store at -20°C for up to 1 year from the date of receipt, and avoid repeat freeze-thaw cycles.

TARGET INFORMATION

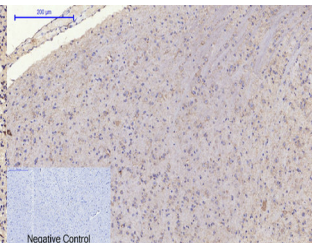
Gene ID	1956
Gene Symbol	EGFR
Uniprot ID	EGFR_HUMAN
Immunogen	The antiserum was produced against synthesized peptide derived from human EGFR at amino acid range 986-1035
Immunogen Region	960-1040
Specificity	EGFR polyclonal antibody (Epidermal Growth Factor Receptor) binds to endogenous Epidermal Growth Factor Receptor at the amino acid region 960-1040.
Immunogen Sequence	



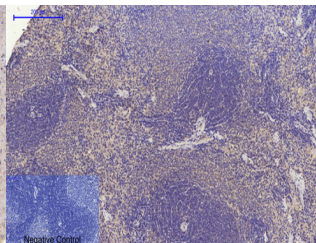
Western blot analysis of various cells using EGFR Polyclonal Antibody diluted at 1: 2000



Negative Control
Immunohistochemical analysis of paraffin-embedded Mouse-lung tissue. 1, EGFR Polyclonal Antibody was diluted at 1:200 (4°C, overnight). 2, Sodium citrate pH 6.0 was used for antibody retrieval (>98°C, 20min). 3, Secondary antibody was diluted at 1:200 (room temperature, 30min). Negative control was used by secondary antibody only.



Negative Control
Immunohistochemical analysis of paraffin-embedded Mouse-brain tissue. 1, EGFR Polyclonal Antibody was diluted at 1:200 (4°C, overnight). 2, Sodium citrate pH 6.0 was used for antibody retrieval (>98°C, 20min). 3, Secondary antibody was diluted at 1:200 (room temperature, 30min). Negative control was used by secondary antibody only.



Negative Control
Immunohistochemical analysis of paraffin-embedded Rat-spleen tissue. 1, EGFR Polyclonal Antibody was diluted at 1:200 (4°C, overnight). 2, Sodium citrate pH 6.0 was used for antibody retrieval (>98°C, 20min). 3, Secondary antibody was diluted at 1:200 (room temperature, 30min). Negative control was used by secondary antibody only.

This product is suitable for in-vitro studies under the RESEARCH USE ONLY [RUO] licence. This product must not be used as for diagnostic or other medical purposes.
St John's Laboratory Ltd, Knowledge Dock Business Centre, University Way, London, E16 2RD | Tel: 0208 223 3081