

Anti-MEGF9 antibody (360-440 Internal) (STJ92848)

STJ92848

GENERAL INFORMATION

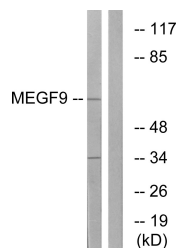
Product Type	Primary antibodies
Short Description	Rabbit polyclonal antibody anti-Multiple Epidermal Growth Factor-Like Domains Protein 9 (360-440 Internal) is suitable for use in Western Blot and ELISA research applications.
Applications	WB, ELISA
Host/Source	Rabbit
Reactivity	Human, Mouse, Rat

PRODUCT PROPERTIES

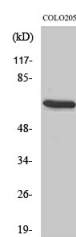
Clonality	Polyclonal
Clone ID	
Concentration	1 mg/mL
Conjugation	Unconjugated
Purification	The antibody was affinity-purified from rabbit anti-serum by affinity-chromatography.
Dilution	WB 1:500-1:2000
Range	ELISA 1:40000
Formulation	PBS, 50% Glycerol, 0.5% BSA and 0.02% Sodium Azide.
Isotype	IgG
Storage	Store at -20°C for up to 1 year from the date of receipt, and avoid repeat freeze-thaw cycles.
Instruction	

TARGET INFORMATION

Gene ID	1955
Gene Symbol	MEGF9
Uniprot ID	MEGF9_HUMAN
Immunogen	The antiserum was produced against synthesized peptide derived from human MEGF9 at amino acid range 383-432
Immunogen Region	360-440 Internal
Specificity	MEGF9 polyclonal antibody (Multiple Epidermal Growth Factor-Like Domains Protein 9) binds to endogenous Multiple Epidermal Growth Factor-Like Domains Protein 9 at the amino acid region 360-440 Internal.
Immunogen Sequence	



Western blot analysis of lysates from COLO cells, using MEGF9 Antibody. The lane on the right is blocked with the synthesized peptide.



Western blot analysis of various cells using EGFL5 Polyclonal Antibody diluted at 1: 500