

Anti-MEGF8 antibody (1220-1300 Internal) (STJ92847)

STJ92847

GENERAL INFORMATION

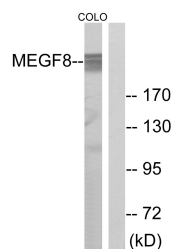
| | |
|--------------------------|---|
| Product Type | Primary antibodies |
| Short Description | Rabbit polyclonal antibody anti-Multiple Epidermal Growth Factor-Like Domains Protein 8 (1220-1300 Internal) is suitable for use in Western Blot, Immunohistochemistry, Immunofluorescence and ELISA research applications. |
| Applications | WB, IHC-P, IF-P, ELISA |
| Host/Source | Rabbit |
| Reactivity | Human, Rat, Mouse |

PRODUCT PROPERTIES

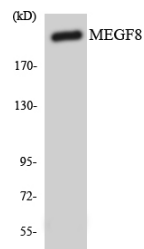
| | |
|----------------------------|--|
| Clonality | Polyclonal |
| Clone ID | |
| Concentration | 1 mg/mL |
| Conjugation | Unconjugated |
| Purification | The antibody was affinity-purified from rabbit anti-serum by affinity-chromatography. |
| Dilution Range | WB 1:500-1:2000 IHC 1:100-1:300 ELISA 1:20000 |
| Formulation | PBS, 50% Glycerol, 0.5% BSA and 0.02% Sodium Azide. |
| Isotype | IgG |
| Storage Instruction | Store at -20°C for up to 1 year from the date of receipt, and avoid repeat freeze-thaw cycles. |

TARGET INFORMATION

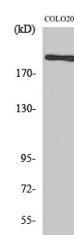
| | |
|---------------------------|--|
| Gene ID | 1954 |
| Gene Symbol | MEGF8 |
| Uniprot ID | MEGF8_HUMAN |
| Immunogen | The antiserum was produced against synthesized peptide derived from human MEGF8 at amino acid range 1243-1292 |
| Immunogen Region | 1220-1300 Internal |
| Specificity | MEGF8 polyclonal antibody (Multiple Epidermal Growth Factor-Like Domains Protein 8) binds to endogenous Multiple Epidermal Growth Factor-Like Domains Protein 8 at the amino acid region 1220-1300 Internal. |
| Immunogen Sequence | |



Western blot analysis of lysates from COLO cells, using MEGF8 Antibody. The lane on the right is blocked with the synthesized peptide.



Western blot analysis of the lysates from COLO205 cells using MEGF8 antibody.



Western blot analysis of various cells using EGFL4 Polyclonal Antibody