

Anti-TRIM25 antibody (180-260 Internal) (STJ92843)

STJ92843

GENERAL INFORMATION

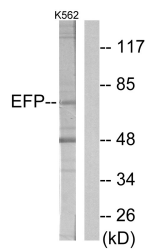
Product Type	Primary antibodies
Short Description	Rabbit polyclonal antibody anti-E3 Ubiquitin/lsg15 Ligase Trim25 (180-260 Internal) is suitable for use in Western Blot, Immunohistochemistry, Immunofluorescence and ELISA research applications.
Applications	WB, IHC-P, IF-P, ELISA
Host/Source	Rabbit
Reactivity	Human, Rat, Mouse

PRODUCT PROPERTIES

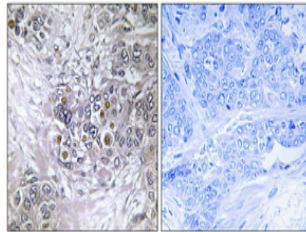
Clonality	Polyclonal
Clone ID	
Concentration	1 mg/mL
Conjugation	Unconjugated
Purification	The antibody was affinity-purified from rabbit anti-serum by affinity-chromatography.
Dilution Range	WB 1:500-1:2000 IHC 1:100-1:300 ELISA 1:10000
Formulation	PBS, 50% Glycerol, 0.5% BSA and 0.02% Sodium Azide.
Isotype	IgG
Storage Instruction	Store at -20°C for up to 1 year from the date of receipt, and avoid repeat freeze-thaw cycles.

TARGET INFORMATION

Gene ID	7706
Gene Symbol	TRIM25
Uniprot ID	TRI25_HUMAN
Immunogen	The antiserum was produced against synthesized peptide derived from human ZNF147 at amino acid range 201-250
Immunogen Region	180-260 Internal
Specificity	TRIM25 polyclonal antibody (E3 Ubiquitin/lsg15 Ligase Trim25) binds to endogenous E3 Ubiquitin/lsg15 Ligase Trim25 at the amino acid region 180-260 Internal.
Immunogen Sequence	



Western blot analysis of lysates from K562 cells, using ZNF147 Antibody. The lane on the right is blocked with the synthesized peptide.



Immunohistochemical analysis of paraffin-embedded Human breast cancer. Antibody was diluted at 1:100 (4°C overnight). High-pressure and temperature Tris-EDTA, pH8.0 was used for antigen retrieval. Negative control (right) obtained from antibody was pre-absorbed by immunogen peptide.

This product is suitable for in-vitro studies under the RESEARCH USE ONLY [RUO] licence. This product must not be used as for diagnostic or other medical purposes.
St John's Laboratory Ltd, Knowledge Dock Business Centre, University Way, London, E16 2RD | Tel: 0208 223 3081