

Anti-EEF1G antibody (70-150 Internal) (STJ92840)

STJ92840

GENERAL INFORMATION

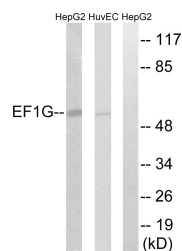
Product Type	Primary antibodies
Short Description	Rabbit polyclonal antibody anti-Elongation Factor 1-Gamma (70-150 Internal) is suitable for use in Western Blot and ELISA research applications.
Applications	WB, ELISA
Host/Source	Rabbit
Reactivity	Human, Mouse, Rat

PRODUCT PROPERTIES

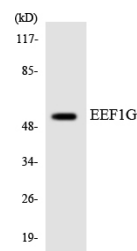
Clonality	Polyclonal
Clone ID	
Concentration	1 mg/mL
Conjugation	Unconjugated
Purification	The antibody was affinity-purified from rabbit anti-serum by affinity-chromatography.
Dilution Range	WB 1:500-1:2000 ELISA 1:20000
Formulation	PBS, 50% Glycerol, 0.5% BSA and 0.02% Sodium Azide.
Isotype	IgG
Storage Instruction	Store at -20°C for up to 1 year from the date of receipt, and avoid repeat freeze-thaw cycles.

TARGET INFORMATION

Gene ID	1937
Gene Symbol	EEF1G
Uniprot ID	EF1G_HUMAN
Immunogen	The antiserum was produced against synthesized peptide derived from human EEF1G at amino acid range 101-150
Immunogen Region	70-150 Internal
Specificity	EEF1G polyclonal antibody (Elongation Factor 1-Gamma) binds to endogenous Elongation Factor 1-Gamma at the amino acid region 70-150 Internal.
Immunogen Sequence	



Western blot analysis of lysates from HUVeC and HepG2 cells, using EEF1G Antibody. The lane on the right is blocked with the synthesized peptide.



Western blot analysis of the lysates from HepG2 cells using EEF1G antibody.



Western blot analysis of various cells using EEF1G Polyclonal Antibody diluted at 1: 1000

This product is suitable for in-vitro studies under the RESEARCH USE ONLY [RUO] licence. This product must not be used as for diagnostic or other medical purposes.
St John's Laboratory Ltd, Knowledge Dock Business Centre, University Way, London, E16 2RD | Tel: 0208 223 3081