

Anti-S1PR5 antibody (310-390 C-Term) (STJ92837)

STJ92837

GENERAL INFORMATION

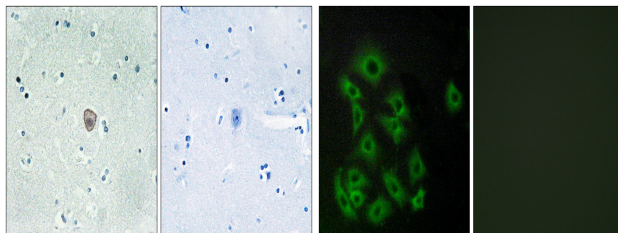
Product Type	Primary antibodies
Short Description	Rabbit polyclonal antibody anti-Sphingosine 1-Phosphate Receptor 5 (310-390 C-Term) is suitable for use in Immunohistochemistry, Immunofluorescence, Immunocytochemistry and ELISA research applications.
Applications	IHC-P, IF, ICC, ELISA
Host/Source	Rabbit
Reactivity	Human, Rat, Mouse

PRODUCT PROPERTIES

Clonality	Polyclonal
Clone ID	
Concentration	1 mg/mL
Conjugation	Unconjugated
Purification	The antibody was affinity-purified from rabbit anti-serum by affinity-chromatography.
Dilution Range	IHC 1:100-1:300 IF 1:200-1:1000 ELISA 1:5000
Formulation	PBS, 50% Glycerol, 0.5% BSA and 0.02% Sodium Azide.
Isotype	IgG
Storage Instruction	Store at -20°C for up to 1 year from the date of receipt, and avoid repeat freeze-thaw cycles.

TARGET INFORMATION

Gene ID	53637
Gene Symbol	S1PR5
Uniprot ID	S1PR5_HUMAN
Immunogen	The antiserum was produced against synthesized peptide derived from human EDG8 at amino acid range 335-384
Immunogen Region	310-390 C-Term
Specificity	S1PR5 polyclonal antibody (Sphingosine 1-Phosphate Receptor 5) binds to endogenous Sphingosine 1-Phosphate Receptor 5 at the amino acid region 310-390 C-Term.
Immunogen Sequence	



Immunohistochemistry analysis of paraffin-embedded human brain tissue, using EDG8 Antibody. The picture on the right is blocked with the synthesized peptide.

Immunofluorescence analysis of A549 cells, using EDG8 Antibody. The picture on the right is blocked with the synthesized peptide.

This product is suitable for in-vitro studies under the RESEARCH USE ONLY [RUO] licence. This product must not be used as for diagnostic or other medical purposes.
St John's Laboratory Ltd, Knowledge Dock Business Centre, University Way, London, E16 2RD | Tel: 0208 223 3081