

Anti-S1PR4 antibody (180-260 Internal) (STJ92833)

STJ92833

GENERAL INFORMATION

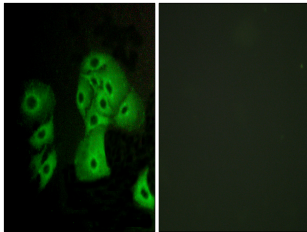
Product Type	Primary antibodies
Short Description	Rabbit polyclonal antibody anti-Sphingosine 1-Phosphate Receptor 4 (180-260 Internal) is suitable for use in Western Blot, Immunofluorescence, Immunocytochemistry and ELISA research applications.
Applications	WB, IF, ICC, ELISA
Host/Source	Rabbit
Reactivity	Human, Rat, Mouse

PRODUCT PROPERTIES

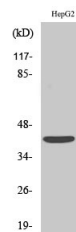
Clonality	Polyclonal
Clone ID	
Concentration	1 mg/mL
Conjugation	Unconjugated
Purification	The antibody was affinity-purified from rabbit anti-serum by affinity-chromatography.
Dilution Range	WB 1:500-1:2000 IF 1:200-1:1000 ELISA 1:5000
Formulation	PBS, 50% Glycerol, 0.5% BSA and 0.02% Sodium Azide.
Isotype	IgG
Storage Instruction	Store at -20°C for up to 1 year from the date of receipt, and avoid repeat freeze-thaw cycles.

TARGET INFORMATION

Gene ID	8698
Gene Symbol	S1PR4
Uniprot ID	S1PR4_HUMAN
Immunogen	The antiserum was produced against synthesized peptide derived from human EDG6 at amino acid range 211-260
Immunogen Region	180-260 Internal
Specificity	S1PR4 polyclonal antibody (Sphingosine 1-Phosphate Receptor 4) binds to endogenous Sphingosine 1-Phosphate Receptor 4 at the amino acid region 180-260 Internal.
Immunogen Sequence	



Immunofluorescence analysis of A549 cells, using EDG6 Antibody. The picture on the right is blocked with the synthesized peptide.



Western blot analysis of various cells using EDG-6 Polyclonal Antibody

This product is suitable for in-vitro studies under the RESEARCH USE ONLY [RUO] licence. This product must not be used as for diagnostic or other medical purposes.
St John's Laboratory Ltd, Knowledge Dock Business Centre, University Way, London, E16 2RD | Tel: 0208 223 3081