

Anti-S1PR2 antibody (230-310 C-Term) (STJ92832)

STJ92832

GENERAL INFORMATION

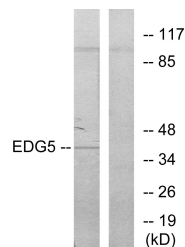
Product Type	Primary antibodies
Short Description	Rabbit polyclonal antibody anti-Sphingosine 1-Phosphate Receptor 2 (230-310 C-Term) is suitable for use in Western Blot, Immunohistochemistry, Immunofluorescence, Immunocytochemistry and ELISA research applications.
Applications	WB, IHC-P, IF, ICC, ELISA
Host/Source	Rabbit
Reactivity	Human, Mouse, Rat

PRODUCT PROPERTIES

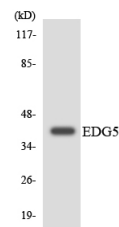
Clonality	Polyclonal
Clone ID	
Concentration	1 mg/mL
Conjugation	Unconjugated
Purification	The antibody was affinity-purified from rabbit anti-serum by affinity-chromatography.
Dilution Range	WB 1:500-1:2000 IHC 1:100-1:300 IF 1:200-1:1000 ELISA 1:10000
Formulation	PBS, 50% Glycerol, 0.5% BSA and 0.02% Sodium Azide.
Isotype	IgG
Storage Instruction	Store at -20°C for up to 1 year from the date of receipt, and avoid repeat freeze-thaw cycles.

TARGET INFORMATION

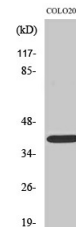
Gene ID	9294
Gene Symbol	S1PR2
Uniprot ID	S1PR2_HUMAN
Immunogen	The antiserum was produced against synthesized peptide derived from human EDG5 at amino acid range 261-310
Immunogen Region	230-310 C-Term
Specificity	S1PR2 polyclonal antibody (Sphingosine 1-Phosphate Receptor 2) binds to endogenous Sphingosine 1-Phosphate Receptor 2 at the amino acid region 230-310 C-Term.
Immunogen Sequence	



Western blot analysis of lysates from COLQ205 cells, using EDG5 Antibody. The lane on the right is blocked with the synthesized peptide.



Western blot analysis of the lysates from RAW264.7 cells using EDG5 antibody.



Western blot analysis of various cells using EDG-5 Polyclonal Antibody

This product is suitable for in-vitro studies under the RESEARCH USE ONLY [RUO] licence. This product must not be used as for diagnostic or other medical purposes.
St John's Laboratory Ltd, Knowledge Dock Business Centre, University Way, London, E16 2RD | Tel: 0208 223 3081