

Anti-S1PR3 antibody (10-90 N-Term) (STJ92828)

STJ92828

GENERAL INFORMATION

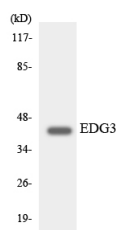
Product Type	Primary antibodies
Short Description	Rabbit polyclonal antibody anti-Sphingosine 1-Phosphate Receptor 3 (10-90 N-Term) is suitable for use in Western Blot, Immunofluorescence, Immunocytochemistry and ELISA research applications.
Applications	WB, IF, ICC, ELISA
Host/Source	Rabbit
Reactivity	Human, Rat, Mouse

PRODUCT PROPERTIES

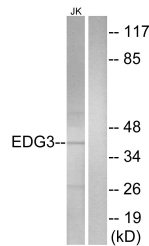
Clonality	Polyclonal
Clone ID	
Concentration	1 mg/mL
Conjugation	Unconjugated
Purification	The antibody was affinity-purified from rabbit anti-serum by affinity-chromatography.
Dilution Range	WB 1:500-1:2000 IF 1:200-1:1000 ELISA 1:5000
Formulation	PBS, 50% Glycerol, 0.5% BSA and 0.02% Sodium Azide.
Isotype	IgG
Storage Instruction	Store at 20°C for up to 1 year from the date of receipt, and avoid repeat freeze-thaw cycles.

TARGET INFORMATION

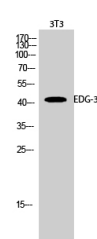
Gene ID	1903
Gene Symbol	S1PR3
Uniprot ID	S1PR3_HUMAN
Immunogen Region	The antiserum was produced against synthesized peptide derived from human EDG3 at amino acid range 1-50
Immunogen Region	10-90 N-Term
Specificity	S1PR3 polyclonal antibody (Sphingosine 1-Phosphate Receptor 3) binds to endogenous Sphingosine 1-Phosphate Receptor 3 at the amino acid region 10-90 N-Term.
Immunogen Sequence	



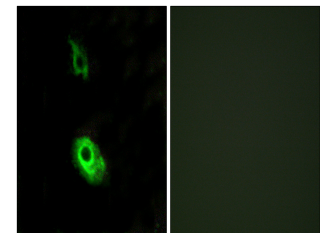
Western blot analysis of the lysates from K562 cells using EDG3 antibody.



Western blot analysis of lysates from Jurkat cells, using EDG3 Antibody. The lane on the right is blocked with the synthesized peptide.



Western blot analysis of 3T3 cells using EDG-3 Polyclonal Antibody



Immunofluorescence analysis of HeLa cells, using EDG3 Antibody. The picture on the right is blocked with the synthesized peptide.

This product is suitable for in-vitro studies under the RESEARCH USE ONLY [RUO] licence. This product must not be used as for diagnostic or other medical purposes.
St John's Laboratory Ltd, Knowledge Dock Business Centre, University Way, London, E16 2RD | Tel: 0208 223 3081