

Anti-S1PR1 antibody (180-260) (STJ92824)

STJ92824

GENERAL INFORMATION

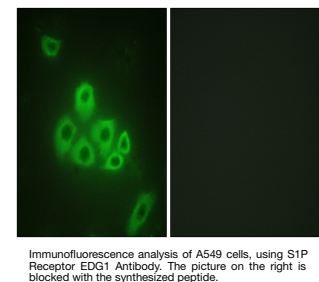
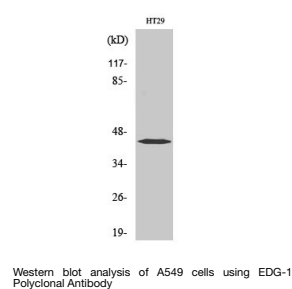
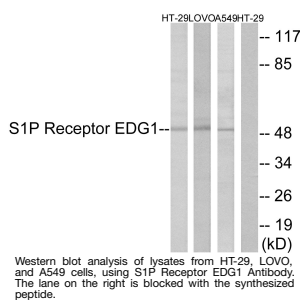
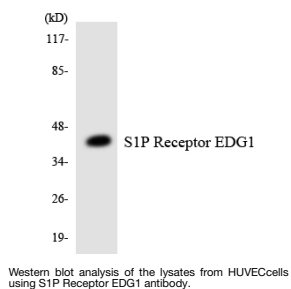
Product Type	Primary antibodies
Short Description	Rabbit polyclonal antibody anti-Sphingosine 1-Phosphate Receptor 1 (180-260) is suitable for use in Western Blot, Immunofluorescence, Immunocytochemistry and ELISA research applications.
Applications	WB, IF, ICC, ELISA
Host/Source	Rabbit
Reactivity	Human, Mouse, Rat

PRODUCT PROPERTIES

Clonality	Polyclonal
Clone ID	
Concentration	1 mg/mL
Conjugation	Unconjugated
Purification	The antibody was affinity-purified from rabbit anti-serum by affinity-chromatography.
Dilution Range	WB 1:500-1:2000 IF 1:200-1:1000 ELISA 1:5000
Formulation	PBS, 50% Glycerol, 0.5% BSA and 0.02% Sodium Azide.
Isotype	IgG
Storage Instruction	Store at -20°C for up to 1 year from the date of receipt, and avoid repeat freeze-thaw cycles.

TARGET INFORMATION

Gene ID	1901
Gene Symbol	S1PR1
Uniprot ID	S1PR1_HUMAN
Immunogen	The antiserum was produced against synthesized peptide derived from human S1P Receptor EDG1 at amino acid range 206-255
Immunogen Region	180-260
Specificity	S1PR1 polyclonal antibody (Sphingosine 1-Phosphate Receptor 1) binds to endogenous Sphingosine 1-Phosphate Receptor 1 at the amino acid region 180-260.
Immunogen Sequence	



This product is suitable for in-vitro studies under the RESEARCH USE ONLY [RUO] licence. This product must not be used as for diagnostic or other medical purposes.
St John's Laboratory Ltd, Knowledge Dock Business Centre, University Way, London, E16 2RD | Tel: 0208 223 3081