

Anti-SLC1A1 antibody (Internal) (STJ92814)

STJ92814

GENERAL INFORMATION

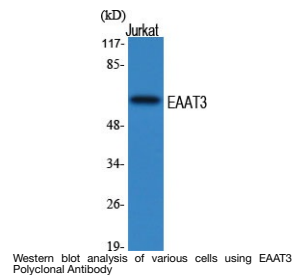
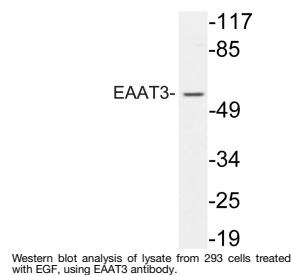
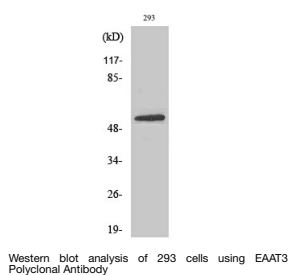
Product Type	Primary antibodies
Short Description	Rabbit polyclonal antibody anti-Excitatory Amino Acid Transporter 3 (Internal) is suitable for use in Western Blot and ELISA research applications.
Applications	WB, ELISA
Host/Source	Rabbit
Reactivity	Human, Mouse, Rat

PRODUCT PROPERTIES

Clonality	Polyclonal
Clone ID	
Concentration	1 mg/mL
Conjugation	Unconjugated
Purification	The antibody was affinity-purified from rabbit anti-serum by affinity-chromatography.
Dilution Range	WB 1:500-1:2000 ELISA 1:10000
Formulation	PBS, 50% Glycerol, 0.5% BSA and 0.02% Sodium Azide.
Isotype	IgG
Storage	Store at -20°C for up to 1 year from the date of receipt, and avoid repeat freeze-thaw cycles.
Instruction	

TARGET INFORMATION

Gene ID	6505
Gene Symbol	SLC1A1
Uniprot ID	EAA3_HUMAN
Immunogen	The antiserum was produced against synthesized peptide derived from human EAAT3 at amino acid range 122-171
Immunogen Region	Internal
Specificity	SLC1A1 polyclonal antibody (Excitatory Amino Acid Transporter 3) binds to endogenous Excitatory Amino Acid Transporter 3 at the amino acid region Internal.
Immunogen Sequence	



This product is suitable for in-vitro studies under the RESEARCH USE ONLY [RUO] licence. This product must not be used as for diagnostic or other medical purposes.
St John's Laboratory Ltd, Knowledge Dock Business Centre, University Way, London, E16 2RD | Tel: 0208 223 3081