

Anti-NFIL3 antibody (30-110 Internal) (STJ92812)

STJ92812

GENERAL INFORMATION

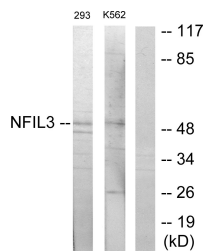
Product Type	Primary antibodies
Short Description	Rabbit polyclonal antibody anti-Nuclear Factor Interleukin-3-Regulated Protein (30-110 Internal) is suitable for use in Western Blot, Immunofluorescence, Immunocytochemistry and ELISA research applications.
Applications	WB, IF, ICC, ELISA
Host/Source	Rabbit
Reactivity	Human, Mouse, Rat

PRODUCT PROPERTIES

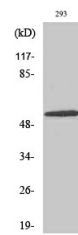
Clonality	Polyclonal
Clone ID	
Concentration	1 mg/mL
Conjugation	Unconjugated
Purification	The antibody was affinity-purified from rabbit anti-serum by affinity-chromatography.
Dilution Range	WB 1:500-1:2000 IF 1:200-1:1000 ELISA 1:20000
Formulation	PBS, 50% Glycerol, 0.5% BSA and 0.02% Sodium Azide.
Isotype	IgG
Storage Instruction	Store at -20°C for up to 1 year from the date of receipt, and avoid repeat freeze-thaw cycles.

TARGET INFORMATION

Gene ID	4783
Gene Symbol	NFIL3
Uniprot ID	NFIL3_HUMAN
Immunogen Region	The antiserum was produced against synthesized peptide derived from human NFIL3 at amino acid range 61-110 30-110 Internal
Specificity	NFIL3 polyclonal antibody (Nuclear Factor Interleukin-3-Regulated Protein) binds to endogenous Nuclear Factor Interleukin-3-Regulated Protein at the amino acid region 30-110 Internal.
Immunogen Sequence	



Western blot analysis of lysates from 293 and K562 cells, using NFIL3 Antibody. The lane on the right is blocked with the synthesized peptide.



Western blot analysis of various cells using E4BP4 Polyclonal Antibody cells nucleus extracted by Minute™ Cytoplasmic and Nuclear Fractionation kit (SC-003, Inventibiotech, MN, USA).