

## Anti-E2F6 antibody (110-190 Internal) (STJ92811)

STJ92811

### GENERAL INFORMATION

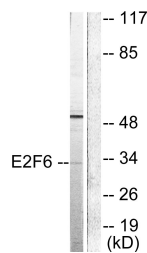
<b>Product Type</b>	Primary antibodies
<b>Short Description</b>	Rabbit polyclonal antibody anti-Transcription Factor E2f6 (110-190 Internal) is suitable for use in Western Blot, Immunohistochemistry, Immunofluorescence and ELISA research applications.
<b>Applications</b>	WB, IHC-P, IF-P, ELISA
<b>Host/Source</b>	Rabbit
<b>Reactivity</b>	Human, Mouse, Rat

### PRODUCT PROPERTIES

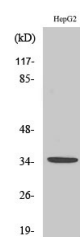
<b>Clonality</b>	Polyclonal
<b>Clone ID</b>	
<b>Concentration</b>	1 mg/mL
<b>Conjugation</b>	Unconjugated
<b>Purification</b>	The antibody was affinity-purified from rabbit anti-serum by affinity-chromatography.
<b>Dilution Range</b>	WB 1:500-1:2000 IHC 1:100-1:300 ELISA 1:20000
<b>Formulation</b>	PBS, 50% Glycerol, 0.5% BSA and 0.02% Sodium Azide.
<b>Isotype</b>	IgG
<b>Storage Instruction</b>	Store at -20°C for up to 1 year from the date of receipt, and avoid repeat freeze-thaw cycles.

### TARGET INFORMATION

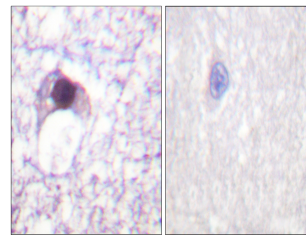
<b>Gene ID</b>	1876
<b>Gene Symbol</b>	E2F6
<b>Uniprot ID</b>	E2F6_HUMAN
<b>Immunogen</b>	The antiserum was produced against synthesized peptide derived from human E2F6 at amino acid range 141-190
<b>Immunogen Region</b>	110-190 Internal
<b>Specificity</b>	E2F6 polyclonal antibody (Transcription Factor E2f6) binds to endogenous Transcription Factor E2f6 at the amino acid region 110-190 Internal.
<b>Immunogen Sequence</b>	



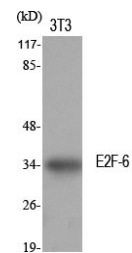
Western blot analysis of lysates from HepG2 cells, using E2F6 Antibody. The lane on the right is blocked with the synthesized peptide.



Western blot analysis of HepG2 cells using E2F6 Polyclonal Antibody diluted at 1: 500 cells nucleus extracted by Minute TM Cytoplasmic and Nuclear Fractionation kit (SC-003, Inventibiotec, MN, USA).



Immunohistochemistry analysis of paraffin-embedded human brain tissue, using E2F6 Antibody. The picture on the right is blocked with the synthesized peptide.



Western blot analysis of various cells using E2F6 Polyclonal Antibody diluted at 1: 500 cells nucleus extracted by Minute TM Cytoplasmic and Nuclear Fractionation kit (SC-003, Inventibiotec, MN, USA).

This product is suitable for in-vitro studies under the RESEARCH USE ONLY [RUO] licence. This product must not be used as for diagnostic or other medical purposes.  
St John's Laboratory Ltd, Knowledge Dock Business Centre, University Way, London, E16 2RD | Tel: 0208 223 3081