

Anti-E2F5 antibody (Internal) (STJ92810)

STJ92810

GENERAL INFORMATION

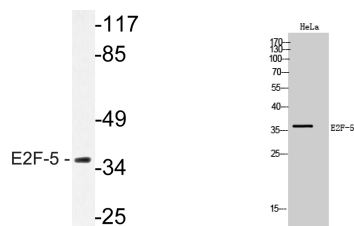
Product Type	Primary antibodies
Short Description	Rabbit polyclonal antibody anti-Transcription Factor E2f5 (Internal) is suitable for use in Western Blot and ELISA research applications.
Applications	WB, ELISA
Host/Source	Rabbit
Reactivity	Human, Mouse, Rat

PRODUCT PROPERTIES

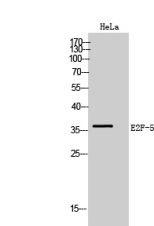
Clonality	Polyclonal
Clone ID	
Concentration	1 mg/mL
Conjugation	Unconjugated
Purification	The antibody was affinity-purified from rabbit anti-serum by affinity-chromatography.
Dilution Range	WB 1:500-1:2000 ELISA 1:20000
Formulation	PBS, 50% Glycerol, 0.5% BSA and 0.02% Sodium Azide.
Isotype	IgG
Storage Instruction	Store at -20°C for up to 1 year from the date of receipt, and avoid repeat freeze-thaw cycles.

TARGET INFORMATION

Gene ID	1875
Gene Symbol	E2F5
Uniprot ID	E2F5_HUMAN
Immunogen	The antiserum was produced against synthesized peptide derived from human E2F-5 at amino acid range 93-142
Immunogen Region	Internal
Specificity	E2F5 polyclonal antibody (Transcription Factor E2f5) binds to endogenous Transcription Factor E2f5 at the amino acid region Internal.
Immunogen Sequence	



Western blot analysis of lysate from HeLa cells, using E2F-5 antibody.



Western blot analysis of HeLa cells using E2F-5 Polyclonal Antibody

This product is suitable for in-vitro studies under the RESEARCH USE ONLY [RUO] licence. This product must not be used as for diagnostic or other medical purposes.
St John's Laboratory Ltd, Knowledge Dock Business Centre, University Way, London, E16 2RD | Tel: 0208 223 3081