

Anti-E2F2 antibody (190-270 Internal) (STJ92808)

STJ92808

GENERAL INFORMATION

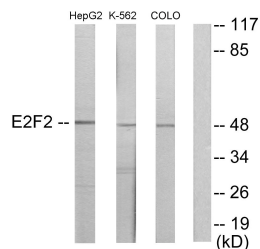
Product Type	Primary antibodies
Short Description	Rabbit polyclonal antibody anti-Transcription Factor E2f2 (190-270 Internal) is suitable for use in Western Blot, Immunohistochemistry, Immunofluorescence and ELISA research applications.
Applications	WB, IHC-P, IF-P, ELISA
Host/Source	Rabbit
Reactivity	Human, Mouse

PRODUCT PROPERTIES

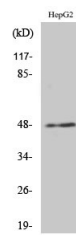
Clonality	Polyclonal
Clone ID	
Concentration	1 mg/mL
Conjugation	Unconjugated
Purification	The antibody was affinity-purified from rabbit anti-serum by affinity-chromatography.
Dilution Range	WB 1:500-1:2000 IHC 1:100-1:300 ELISA 1:40000
Formulation	PBS, 50% Glycerol, 0.5% BSA and 0.02% Sodium Azide.
Isotype	IgG
Storage Instruction	Store at -20°C for up to 1 year from the date of receipt, and avoid repeat freeze-thaw cycles.

TARGET INFORMATION

Gene ID	1870
Gene Symbol	E2F2
Uniprot ID	E2F2_HUMAN
Immunogen	The antiserum was produced against synthesized peptide derived from human E2F2 at amino acid range 221-270
Immunogen Region	190-270 Internal
Specificity	E2F2 polyclonal antibody (Transcription Factor E2f2) binds to endogenous Transcription Factor E2f2 at the amino acid region 190-270 Internal.
Immunogen Sequence	



Western blot analysis of lysates from HepG2, K562, and COLO205 cells, using E2F2 Antibody. The lane on the right is blocked with the synthesized peptide.



Western blot analysis of various cells using E2F2 Polyclonal Antibody cells nucleus extracted by Minute™ Cytoplasmic and Nuclear Fractionation kit (SC-003, InventiBiotech, MN, USA).

This product is suitable for in-vitro studies under the RESEARCH USE ONLY [RUO] licence. This product must not be used as for diagnostic or other medical purposes.
St John's Laboratory Ltd, Knowledge Dock Business Centre, University Way, London, E16 2RD | Tel: 0208 223 3081