

Anti-E2F1 antibody (370-450) (STJ92807)

STJ92807

GENERAL INFORMATION

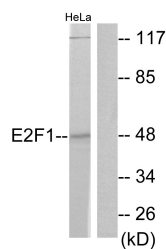
Product Type	Primary antibodies
Short Description	Rabbit polyclonal antibody anti-Transcription Factor E2f1 (370-450) is suitable for use in Western Blot, Immunohistochemistry, Immunofluorescence and ELISA research applications.
Applications	WB, IHC-P, IF-P, ELISA
Host/Source	Rabbit
Reactivity	Human, Mouse

PRODUCT PROPERTIES

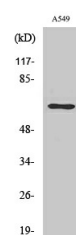
Clonality	Polyclonal
Clone ID	
Concentration	1 mg/mL
Conjugation	Unconjugated
Purification	The antibody was affinity-purified from rabbit anti-serum by affinity-chromatography.
Dilution Range	WB 1:500-1:2000 IHC 1:100-1:300 ELISA 1:5000
Formulation	PBS, 50% Glycerol, 0.5% BSA and 0.02% Sodium Azide.
Isotype	IgG
Storage Instruction	Store at -20°C for up to 1 year from the date of receipt, and avoid repeat freeze-thaw cycles.

TARGET INFORMATION

Gene ID	1869
Gene Symbol	E2F1
Uniprot ID	E2F1_HUMAN
Immunogen	The antiserum was produced against synthesized peptide derived from human E2F1 at amino acid range 388-437
Immunogen Region	370-450
Specificity	E2F1 polyclonal antibody (Transcription Factor E2f1) binds to endogenous Transcription Factor E2f1 at the amino acid region 370-450.
Immunogen Sequence	



Western blot analysis of lysates from HeLa cells, treated with Etoposide 25uM 24h, using E2F1 Antibody. The lane on the right is blocked with the synthesized peptide.



Western blot analysis of various cells using E2F1 Polyclonal Antibody diluted at 1: 2000

This product is suitable for in-vitro studies under the RESEARCH USE ONLY [RUO] licence. This product must not be used as for diagnostic or other medical purposes.
St John's Laboratory Ltd, Knowledge Dock Business Centre, University Way, London, E16 2RD | Tel: 0208 223 3081