

Anti-DZIP3 antibody (650-730 Internal) (STJ92805)

STJ92805

GENERAL INFORMATION

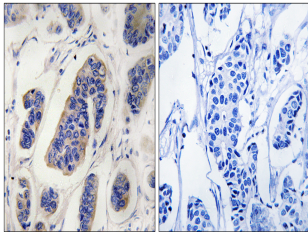
| | |
|--------------------------|---|
| Product Type | Primary antibodies |
| Short Description | Rabbit polyclonal antibody anti-E3 Ubiquitin-Protein Ligase Dzip3 (650-730 Internal) is suitable for use in Western Blot, Immunohistochemistry, Immunofluorescence and ELISA research applications. |
| Applications | WB, IHC-P, IF-P, ELISA |
| Host/Source | Rabbit |
| Reactivity | Human, Rat, Mouse |

PRODUCT PROPERTIES

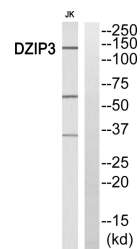
| | |
|----------------------------|--|
| Clonality | Polyclonal |
| Clone ID | |
| Concentration | 1 mg/mL |
| Conjugation | Unconjugated |
| Purification | The antibody was affinity-purified from rabbit anti-serum by affinity-chromatography. |
| Dilution Range | WB 1:500-1:2000 IHC 1:100-1:300 ELISA 1:40000 |
| Formulation | PBS, 50% Glycerol, 0.5% BSA and 0.02% Sodium Azide. |
| Isotype | IgG |
| Storage Instruction | Store at -20°C for up to 1 year from the date of receipt, and avoid repeat freeze-thaw cycles. |

TARGET INFORMATION

| | |
|---------------------------|--|
| Gene ID | 9666 |
| Gene Symbol | DZIP3 |
| Uniprot ID | DZIP3_HUMAN |
| Immunogen Region | The antiserum was produced against synthesized peptide derived from human DZIP3 at amino acid range 681-730 |
| Specificity | 650-730 Internal |
| Immunogen Sequence | DZIP3 polyclonal antibody (E3 Ubiquitin-Protein Ligase Dzip3) binds to endogenous E3 Ubiquitin-Protein Ligase Dzip3 at the amino acid region 650-730 Internal. |



Immunohistochemistry analysis of paraffin-embedded human breast carcinoma, using DZIP3 Antibody. The lane on the right is blocked with the DZIP3 peptide.



Western blot analysis of DZIP3 Antibody. The lane on the right is blocked with the DZIP3 peptide.

This product is suitable for in-vitro studies under the RESEARCH USE ONLY [RUO] licence. This product must not be used as for diagnostic or other medical purposes.
 St John's Laboratory Ltd, Knowledge Dock Business Centre, University Way, London, E16 2RD | Tel: 0208 223 3081