

Anti-DYSF antibody (1950-2030 C-Term) (STJ92803)

STJ92803

GENERAL INFORMATION

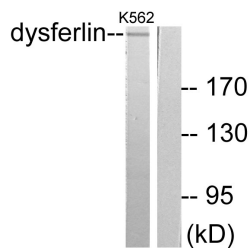
Product Type	Primary antibodies
Short Description	Rabbit polyclonal antibody anti-Dysferlin (1950-2030 C-Term) is suitable for use in Western Blot, Immunofluorescence, Immunocytochemistry and ELISA research applications.
Applications	WB, IF, ICC, ELISA
Host/Source	Rabbit
Reactivity	Human, Mouse

PRODUCT PROPERTIES

Clonality	Polyclonal
Clone ID	
Concentration	1 mg/mL
Conjugation	Unconjugated
Purification	The antibody was affinity-purified from rabbit anti-serum by affinity-chromatography.
Dilution Range	WB 1:500-1:2000 IF 1:200-1:1000 ELISA 1:10000
Formulation	PBS, 50% Glycerol, 0.5% BSA and 0.02% Sodium Azide.
Isotype	IgG
Storage Instruction	Store at -20°C for up to 1 year from the date of receipt, and avoid repeat freeze-thaw cycles.

TARGET INFORMATION

Gene ID	8291
Gene Symbol	DYSF
Uniprot ID	DYSF_HUMAN
Immunogen	The antiserum was produced against synthesized peptide derived from human Dysferlin at amino acid range 1981-2030
Immunogen Region	1950-2030 C-Term
Specificity	DYSF polyclonal antibody (Dysferlin) binds to endogenous Dysferlin at the amino acid region 1950-2030 C-Term.
Immunogen Sequence	



Western blot analysis of lysates from K562 cells, using Dysferlin Antibody. The lane on the right is blocked with the synthesized peptide.