

## Anti-DYRK1B antibody (300-380 Internal) (STJ92801)

STJ92801

### GENERAL INFORMATION

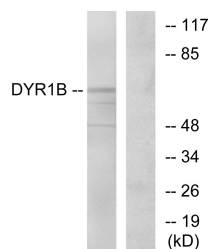
<b>Product Type</b>	Primary antibodies
<b>Short Description</b>	Rabbit polyclonal antibody anti-Dual Specificity Tyrosine-Phosphorylation-Regulated Kinase 1b (300-380 Internal) is suitable for use in Western Blot, Immunohistochemistry, Immunofluorescence and ELISA research applications.
<b>Applications</b>	WB, IHC-P, IF-P, ELISA
<b>Host/Source</b>	Rabbit
<b>Reactivity</b>	Human, Mouse

### PRODUCT PROPERTIES

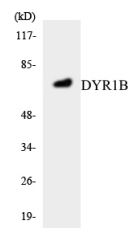
<b>Clonality</b>	Polyclonal
<b>Clone ID</b>	
<b>Concentration</b>	1 mg/mL
<b>Conjugation</b>	Unconjugated
<b>Purification</b>	The antibody was affinity-purified from rabbit anti-serum by affinity-chromatography.
<b>Dilution Range</b>	WB 1:500-1:2000 IHC 1:100-1:300 ELISA 1:20000
<b>Formulation</b>	PBS, 50% Glycerol, 0.5% BSA and 0.02% Sodium Azide.
<b>Isotype</b>	IgG
<b>Storage Instruction</b>	Store at 20°C for up to 1 year from the date of receipt, and avoid repeat freeze-thaw cycles.

### TARGET INFORMATION

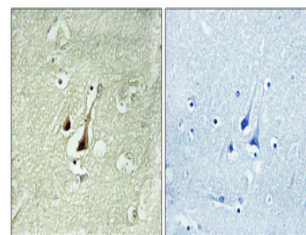
<b>Gene ID</b>	9149
<b>Gene Symbol</b>	DYRK1B
<b>Uniprot ID</b>	DYR1B_HUMAN
<b>Immunogen</b>	The antiserum was produced against synthesized peptide derived from human DYRK1B at amino acid range 331-380
<b>Immunogen Region</b>	300-380 Internal
<b>Specificity</b>	DYRK1B polyclonal antibody (Dual Specificity Tyrosine-Phosphorylation-Regulated Kinase 1b) binds to endogenous Dual Specificity Tyrosine-Phosphorylation-Regulated Kinase 1b at the amino acid region 300-380 Internal.
<b>Immunogen Sequence</b>	



Western blot analysis of lysates from Jurkat cells, using DYRK1B Antibody. The lane on the right is blocked with the synthesized peptide.



Western blot analysis of the lysates from COLO205 cells using DYRK1B antibody.



Immunohistochemical analysis of paraffin-embedded Human brain. Antibody was diluted at 1:100 (4°C overnight). High-pressure and temperature Tris-EDTA, pH8.0 was used for antigen retrieval. Negative control (right) obtained from antibody was pre-absorbed by immunogen peptide.

This product is suitable for in-vitro studies under the RESEARCH USE ONLY [RUO] licence. This product must not be used as for diagnostic or other medical purposes.  
St John's Laboratory Ltd, Knowledge Dock Business Centre, University Way, London, E16 2RD | Tel: 0208 223 3081