

Anti-DUSP19 antibody (80-160 Internal) (STJ92788)

STJ92788

GENERAL INFORMATION

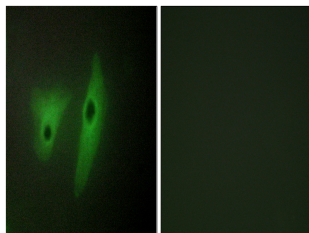
Product Type	Primary antibodies
Short Description	Rabbit polyclonal antibody anti-Dual Specificity Protein Phosphatase 19 (80-160 Internal) is suitable for use in Western Blot, Immunofluorescence, Immunocytochemistry and ELISA research applications.
Applications	WB, IF, ICC, ELISA
Host/Source	Rabbit
Reactivity	Human, Simian

PRODUCT PROPERTIES

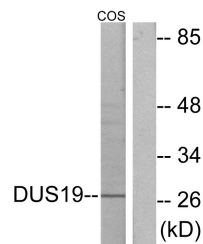
Clonality	Polyclonal
Clone ID	
Concentration	1 mg/mL
Conjugation	Unconjugated
Purification	The antibody was affinity-purified from rabbit anti-serum by affinity-chromatography.
Dilution Range	WB 1:500-1:2000 IF 1:200-1:1000 ELISA 1:20000
Formulation	PBS, 50% Glycerol, 0.5% BSA and 0.02% Sodium Azide.
Isotype	IgG
Storage Instruction	Store at -20°C for up to 1 year from the date of receipt, and avoid repeat freeze-thaw cycles.

TARGET INFORMATION

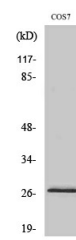
Gene ID	142679
Gene Symbol	DUSP19
Uniprot ID	DUS19_HUMAN
Immunogen	The antiserum was produced against synthesized peptide derived from human DUSP19 at amino acid range 111-160
Immunogen Region	80-160 Internal
Specificity	DUSP19 polyclonal antibody (Dual Specificity Protein Phosphatase 19) binds to endogenous Dual Specificity Protein Phosphatase 19 at the amino acid region 80-160 Internal.
Immunogen Sequence	



Immunofluorescence analysis of HeLa cells, using DUSP19 Antibody. The picture on the right is blocked with the synthesized peptide.



Western blot analysis of lysates from COS7 cells, using DUSP19 Antibody. The lane on the right is blocked with the synthesized peptide.



Western blot analysis of various cells using DUSP19 Polyclonal Antibody

This product is suitable for in-vitro studies under the RESEARCH USE ONLY [RUO] licence. This product must not be used as for diagnostic or other medical purposes.
St John's Laboratory Ltd, Knowledge Dock Business Centre, University Way, London, E16 2RD | Tel: 0208 223 3081