

Anti-DUS2 antibody (390-470 C-Term) (STJ92787)

STJ92787

GENERAL INFORMATION

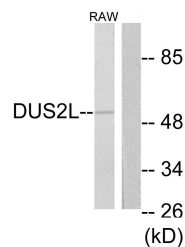
Product Type	Primary antibodies
Short Description	Rabbit polyclonal antibody anti-Trna-Dihydrouridine (20 Synthase Nad (P+-Like (390-470 C-Term) is suitable for use in Western Blot, Immunohistochemistry, Immunofluorescence and ELISA research applications.
Applications	WB, IHC-P, IF-P, ELISA
Host/Source	Rabbit
Reactivity	Human, Mouse

PRODUCT PROPERTIES

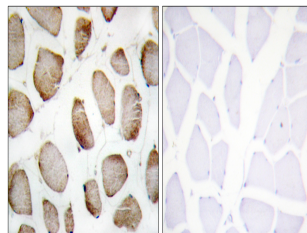
Clonality	Polyclonal
Clone ID	
Concentration	1 mg/mL
Conjugation	Unconjugated
Purification	The antibody was affinity-purified from rabbit anti-serum by affinity-chromatography.
Dilution Range	WB 1:500-1:2000 IHC 1:100-1:300 ELISA 1:20000
Formulation	PBS, 50% Glycerol, 0.5% BSA and 0.02% Sodium Azide.
Isotype	IgG
Storage Instruction	Store at -20°C for up to 1 year from the date of receipt, and avoid repeat freeze-thaw cycles.

TARGET INFORMATION

Gene ID	54920
Gene Symbol	DUS2
Uniprot ID	DUS2L_HUMAN
Immunogen	The antiserum was produced against synthesized peptide derived from human DUS2L at amino acid range 421-470
Immunogen Region	390-470 C-Term
Specificity	DUS2 polyclonal antibody (Trna-Dihydrouridine (20 Synthase Nad (P+-Like) binds to endogenous Trna-Dihydrouridine (20 Synthase Nad (P+-Like at the amino acid region 390-470 C-Term.
Immunogen Sequence	



Western blot analysis of lysates from RAW264.7 cells, using DUS2L Antibody. The lane on the right is blocked with the synthesized peptide.



Immunohistochemistry analysis of paraffin-embedded human skeletal muscle tissue, using DUS2L Antibody. The picture on the right is blocked with the synthesized peptide.